

## Activation of the murine EP3 receptor for PGE<sub>2</sub> inhibits cAMP production and promotes platelet aggregation

Jean-Etienne Fabre, ... , Thomas M. Coffman, Beverly H. Koller

*J Clin Invest.* 2001;107(5):603-610. <https://doi.org/10.1172/JCI10881>.

### Article

The importance of arachidonic acid metabolites (termed eicosanoids), particularly those derived from the COX-1 and COX-2 pathways (termed prostanoids), in platelet homeostasis has long been recognized. Thromboxane is a potent agonist, whereas prostacyclin is an inhibitor of platelet aggregation. In contrast, the effect of prostaglandin E<sub>2</sub> (PGE<sub>2</sub>) on platelet aggregation varies significantly depending on its concentration. Low concentrations of PGE<sub>2</sub> enhance platelet aggregation, whereas high PGE<sub>2</sub> levels inhibit aggregation. The mechanism for this dual action of PGE<sub>2</sub> is not clear. This study shows that among the four PGE<sub>2</sub> receptors (EP1–EP4), activation of EP3 is sufficient to mediate the proaggregatory actions of low PGE<sub>2</sub> concentration. In contrast, the prostacyclin receptor (IP) mediates the inhibitory effect of higher PGE<sub>2</sub> concentrations. Furthermore, the relative activation of these two receptors, EP3 and IP, regulates the intracellular level of cAMP and in this way conditions the response of the platelet to aggregating agents. Consistent with these findings, loss of the EP3 receptor in a model of venous inflammation protects against formation of intravascular clots. Our results suggest that local production of PGE<sub>2</sub> during an inflammatory process can modulate ensuing platelet responses.

**Find the latest version:**

<https://jci.me/10881/pdf>



# Activation of the murine EP3 receptor for PGE<sub>2</sub> inhibits cAMP production and promotes platelet aggregation

Jean-Etienne Fabre,<sup>1</sup> MyTrang Nguyen,<sup>1</sup> Krairek Athirakul,<sup>2</sup> Kenneth Coggins,<sup>1</sup> John D. McNeish,<sup>3</sup> Sandra Austin,<sup>4</sup> Leslie K. Parise,<sup>5</sup> Garret A. FitzGerald,<sup>4</sup> Thomas M. Coffman,<sup>2</sup> and Beverly H. Koller<sup>1</sup>

<sup>1</sup>Department of Medicine, University of North Carolina, Chapel Hill, North Carolina, USA

<sup>2</sup>Department of Medicine, Duke University Medical Center, Durham, North Carolina, USA

<sup>3</sup>Center for Experimental Therapeutics, Pfizer Central Research, Groton, Connecticut, USA

<sup>4</sup>University of Pennsylvania Medical Center, Center for Experimental Therapeutics, Philadelphia, Pennsylvania, USA

<sup>5</sup>Department of Pharmacology, Center for Thrombosis and Hemostasis and Lineberger Cancer Center, University of North Carolina, Chapel Hill, North Carolina, USA

Address correspondence to: B.H. Koller, Department of Medicine, CB no. 7248, Thurston Bowles Building, University of North Carolina–Chapel Hill, Chapel Hill, North Carolina 27599, USA. Phone: (919) 962-2153; Fax: (919) 966-7524; E-mail: Treawouns@aol.com.

Received for publication July 26, 2000, and accepted in revised form January 23, 2001.

The importance of arachidonic acid metabolites (termed eicosanoids), particularly those derived from the COX-1 and COX-2 pathways (termed prostanoids), in platelet homeostasis has long been recognized. Thromboxane is a potent agonist, whereas prostacyclin is an inhibitor of platelet aggregation. In contrast, the effect of prostaglandin E<sub>2</sub> (PGE<sub>2</sub>) on platelet aggregation varies significantly depending on its concentration. Low concentrations of PGE<sub>2</sub> enhance platelet aggregation, whereas high PGE<sub>2</sub> levels inhibit aggregation. The mechanism for this dual action of PGE<sub>2</sub> is not clear. This study shows that among the four PGE<sub>2</sub> receptors (EP1–EP4), activation of EP3 is sufficient to mediate the proaggregatory actions of low PGE<sub>2</sub> concentration. In contrast, the prostacyclin receptor (IP) mediates the inhibitory effect of higher PGE<sub>2</sub> concentrations. Furthermore, the relative activation of these two receptors, EP3 and IP, regulates the intracellular level of cAMP and in this way conditions the response of the platelet to aggregating agents. Consistent with these findings, loss of the EP3 receptor in a model of venous inflammation protects against formation of intravascular clots. Our results suggest that local production of PGE<sub>2</sub> during an inflammatory process can modulate ensuing platelet responses.

*J. Clin. Invest.* 107:603–610 (2001).

## Introduction

Platelets, upon activation by specific agonists, play a critical role in hemostasis by contributing to thrombus formation. In addition, a role for platelets in the pathogenesis of a number of cardiovascular events, such as myocardial infarction and stroke, is recognized. In many such cases, the underlying vascular disease, including atherosclerosis and vasculitis, has an important inflammatory component that might affect platelet function.

Arachidonic acid released upon cell activation by phospholipases is converted by PGH/G synthase 1 and 2, commonly referred to as cyclooxygenases COX-1 and COX-2, into PGH<sub>2</sub>. The latter is further metabolized to form PGE<sub>2</sub>, PGF<sub>2α</sub>, PGD<sub>2</sub>, prostacyclin (PGI<sub>2</sub>) and thromboxane (TXA<sub>2</sub>). COX-1 and COX-2 metabolites are termed prostanoids, and the particular prostanoid produced varies depending on cell type. Platelets contain high levels of thromboxane synthase and thus produce primarily TXA<sub>2</sub>. In healthy vessels, low levels of prostanoids are produced by both the endothelium and the underlying smooth muscle cells (1). The amount of prostanoids produced is determined at least in part by the activity of COX-1 and COX-2 (2, 3). During an inflammatory response, a number of stimuli

including IFN-1β, TNF-α, and bacterial lipopolysaccharide can induce isolated cells to express COX-2 (4). IFN-1β has been shown to increase expression of COX-2 in both human saphenous vein and internal mammary arteries in organ culture (2). Furthermore COX-2 expression in vivo has been reported to be higher in atherosclerotic lesions (which contains macrophages, smooth muscle cells, or endothelial cells) than in healthy vessels (5). PGE<sub>2</sub> is the predominant prostaglandin released in response to inflammatory mediators by primary cultures of vascular smooth muscle cells (2) and by macrophages (6, 7).

The potential for COX metabolites of arachidonic acid to serve as agonists for platelet function is well known. For example, TXA<sub>2</sub>, the principal metabolite of arachidonic acid in platelets, is a potent stimulator of platelet aggregation (8), whereas prostacyclin, the principal cyclooxygenase product of vascular endothelium, inhibits platelet activation. However, the role of other COX metabolites, such as PGE<sub>2</sub>, in the regulation of platelet function remains unclear.

The actions of PGE<sub>2</sub> as well as other prostanoids are mediated through binding to specific high-affinity receptors that belong to the large family of G pro-

tein-associated receptors. Unlike the other prostanoids, for which a single receptor has been identified, PGE<sub>2</sub> binds with similar affinity to four receptors: EP1, EP2, EP3, and EP4 (9). The EP3 receptor is unique in that multiple isoforms have been identified. All of the prostanoid receptors identified to date are highly conserved across species (the sequence homology between human and mouse receptors is in the range of 80–90%) (9), and multiple isoforms of EP3 are found in all species examined to date. In the mouse, three isoforms of the EP3 receptor have been identified (10). EP3 isoforms differ in the primary sequence of the cytoplasmic domain and, as a consequence, differ in their coupling efficiency with various G proteins. EP3 receptors have been shown to couple to G<sub>i</sub>, G<sub>s</sub>, and G<sub>q</sub> proteins (11, 12). Therefore it is likely that physiological consequences of activation of the EP3 receptor may vary substantially depending on the cell type examined.

In addition to revealing the expression of the thromboxane TP and the prostacyclin IP receptors, RT-PCR analysis of RNA prepared from human platelets indicates that platelets express at least two EP receptors, including three of the six human EP3 isoforms and EP4 (10). The expression of numerous EP receptors coupled to different second messenger systems provides an explanation for the often contradictory actions of PGE<sub>2</sub> in physiological responses. Generation of mice deficient in each of the EP receptors has provided a direct approach for identifying both the receptors through which PGE<sub>2</sub> activates various cells and the contribution of these pathways to physiological responses in the animal. In this report, using a series of mice deficient in EP, IP, and TP receptors, we identified the prostanoid receptors and the mechanism through which PGE<sub>2</sub> regulates platelet physiology *in vitro* and *in vivo*. Taken together, these studies support a model in which local production of PGE<sub>2</sub> during inflammatory responses dramatically enhances platelet aggregation by opposing increases in cAMP, such as those mediated by prostacyclin, and hence increasing the sensitivity of platelets to aggregating agents.

## Methods

**Animal welfare.** The use of experimental animals was in accordance with the guidelines of the Institutional Animal Care and Use Committee of the University of North Carolina at Chapel Hill.

**Mice.** Generation of *Ep2*<sup>-/-</sup> (13), *Ep3*<sup>-/-</sup> (14), *Ep4*<sup>-/-</sup> (15), and *Ip*<sup>-/-</sup> (16) mice used in this study has been reported previously. The *Ep1* null mutation was introduced into the DBA/1Lac background by targeted disruption of this gene using an embryonic stem cell line derived directly from the DBA/1Lac mouse strain. EP2-, EP3-, and IP-deficient mice were maintained in our animal facility on 129 background, EP1-deficient mice on DBA background, and EP4-deficient mice on mixed background. Eight- to twenty-week-old male and female mice were used for experiments, and wild-type littermate animals were used as controls.

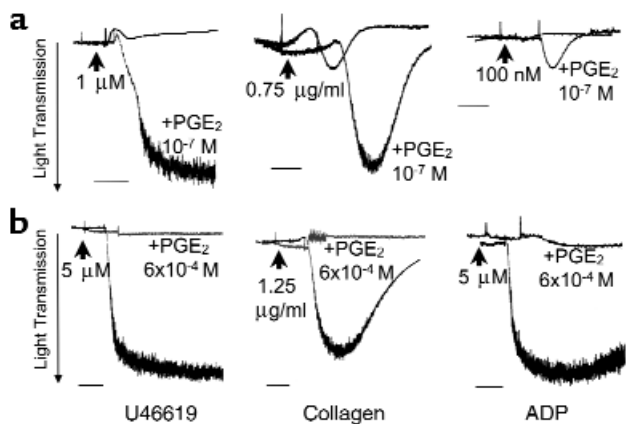
**Platelet aggregation.** Whole blood was collected from the heart of mice under pentobarbital anesthesia into heparinized (10 U/ml) syringes, except when stated that blood was collected on 3.8% sodium citrate. Blood was pooled from four to seven animals and centrifuged at 100 g for 15 minutes, enabling separation of platelet-rich plasma (PRP). Platelet-poor plasma was obtained by centrifugation of the remaining blood at 2,000 g for 15 minutes. Aggregation tests were performed in an optical Chronolog aggregometer (Chrono-Log Corp., Havertown, Pennsylvania, USA), using a volume of 250 µl of PRP adjusted to 500,000 platelets per µl, with platelet-poor plasma as diluent. Platelet-poor plasma also served as a 100% reference for aggregation.

**Determination of cytosolic [Ca<sup>2+</sup>].** After collecting blood in 0.35% (wt/vol) sodium citrate, PRP was prepared and centrifuged at 500 g for 10 minutes. Platelets were resuspended in Ca<sup>2+</sup>-free Tyrode's buffer containing 0.35% (wt/vol) albumin. Washed platelets were incubated with Indo-1AM (2 µg ml<sup>-1</sup>) for 45 minutes at ambient temperature in the dark. After centrifugation, platelets were resuspended in Ca<sup>2+</sup>-free Tyrode's buffer, and 1 mM CaCl<sub>2</sub> was added before the experiment. Cytosolic calcium was measured using a Perkin-Elmer 650-40 fluorometer (Perkin-Elmer Corp., Norwalk, Connecticut, USA).

**Measurement of adenylyl cyclase activity in platelets.** Washed platelets (1.5 × 10<sup>7</sup> ml<sup>-1</sup>) were stimulated with 10 µM PGE<sub>2</sub> (dinoprostone; Cayman Chemical, Ann Arbor, Michigan, USA) or 7 nM PGI<sub>2</sub> (epoprostenol sodium salt; Cayman Chemical) at 37°C. These PGE<sub>2</sub> or PGI<sub>2</sub> concentrations were previously determined to yield values in the middle of the cAMP standard curve. The reaction was stopped by 1:5 (vol/vol) perchloric acid (20%) at 15 seconds. Samples were incubated for 20 minutes on ice and centrifuged at 2,000 g for 15 minutes at 4°C. A total of 10 M KOH was added, and precipitating KClO<sub>4</sub> was pelleted by centrifuging at 2,000 g for 15 minutes at 4°C. Perchloric acid was removed using a mix of tri-n-octylamine and 1,1,2-trichloro-trifluoroethane. The amount of cAMP in the supernatant was determined using an enzyme immunoassay kit and following the manufacturer's instructions (Amersham Pharmacia Biotech, Little Chalfont, United Kingdom).

**Bleeding time measurement.** The tails of restrained mice were placed under a heating lamp at controlled temperature (37°C). The tail was cut off at 1 cm from the tip, and emerging blood was blotted every 15 seconds without touching the wound. Bleeding time was measured until bleeding had ceased for 30 seconds (17). In a second experiment, mice were placed in a restraining device and their tails were secured in a vertical position. A 3- to 5-mm segment of the tail was transected, and the remaining length was immersed into 37°C sterile isotonic saline. Bleeding time was measured from transection time until bleeding could no longer be detected.

**Analysis of thrombus formation.** Mice (20–25 g) were anesthetized with pentobarbital and the jugular veins



**Figure 1**

The dual effect of PGE<sub>2</sub> on platelet aggregation. (a) Wild-type platelets are exposed to a low concentration of U46619 (1 μM), collagen (0.75 μg/ml), or ADP (100 nM) in the absence or presence of 10<sup>-7</sup> M PGE<sub>2</sub>. At these low levels of stimulation, these agonists do not induce aggregation, except in the presence of PGE<sub>2</sub>. (b) Higher PGE<sub>2</sub> concentrations inhibit the full aggregation induced by 5 μM U46619, 1.25 μg/ml collagen, or 5 μM ADP. Scale bars represent 1 minute. These experiments were repeated three times, and representative traces are shown. The mean of the maximal aggregation was calculated for samples treated with PGE<sub>2</sub> and the aggregating agent and for samples treated with the aggregating agent alone. In all cases, the maximal aggregation was significantly higher in the PGE<sub>2</sub>-treated samples (*P* < 0.01; unpaired *t* test).

exposed by a cervical incision. A strip of Parafilm (American National Can, Chicago, Illinois, USA) was slipped under the vein and 100% ethanol, 30 μl of arachidonic acid (free acid, 50 mg/ml in ethanol), or eicosatrienoic acid (Cayman Chemical) was applied to the vein. After 1 minute, the Parafilm was removed, the wound was closed, and the mice were allowed to recover from anesthesia. After 3 hours, the vein was exposed again, and the presence of a thrombus was determined under magnification. The persistence of blood flow was examined by cutting the proximal end of the vein just upstream of the ligation of the jugular confluent. Thrombosis was scored from 0 to 4 as proposed previously (18).

## Results

Although PGE<sub>2</sub> (10<sup>-7</sup> to 10<sup>-3</sup> M) alone has no effect on platelet aggregation *ex vivo*, this lipid mediator can stimulate or inhibit platelet aggregation triggered by other agonists, including collagen, ADP, and thromboxane and its analogue U46619. The particular effect of PGE<sub>2</sub> on platelet aggregation is determined primarily by its local concentration. Thus, as shown in Figure 1 and consistent with previous observations (19–21), PGE<sub>2</sub> added at concentrations below 10<sup>-5</sup> M does not induce platelet aggregation but enhances aggregation induced by U46619, ADP, or collagen. Conversely, at concentrations greater than 10<sup>-4</sup> M, PGE<sub>2</sub> markedly inhibits the ability of these agonists to promote aggregation.

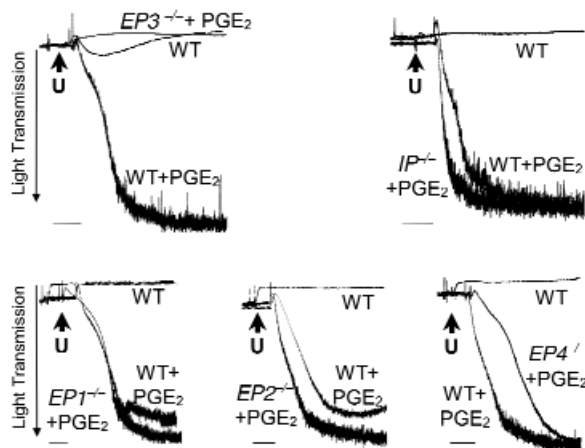
PGE<sub>2</sub> mediates its biologic actions by binding to one of four different cell-surface receptors, termed EP1,

EP2, EP3, and EP4 (9, 22, 23). This raises the possibility that the two opposing actions of PGE<sub>2</sub> on platelet function might be mediated by different EP receptors. To determine whether this is the case, we examined the effects of low (10<sup>-7</sup> M) and high (10<sup>-4</sup> M) concentrations of PGE<sub>2</sub> on the function of platelets that were deficient in each of the four EP receptors.

As shown in Figure 2, low concentration of PGE<sub>2</sub> enhanced U46619-induced aggregation of platelets from EP1-, EP2-, or EP4-deficient mice, and the proaggregatory action of PGE<sub>2</sub> on these platelets was essentially identical to that observed with wild-type platelets. In contrast, 10<sup>-7</sup> M PGE<sub>2</sub> did not enhance aggregation of platelets obtained from EP3-deficient mice. This indicates that the ability of PGE<sub>2</sub> to augment platelet aggregation is mediated primarily by stimulation of the EP3 receptor.

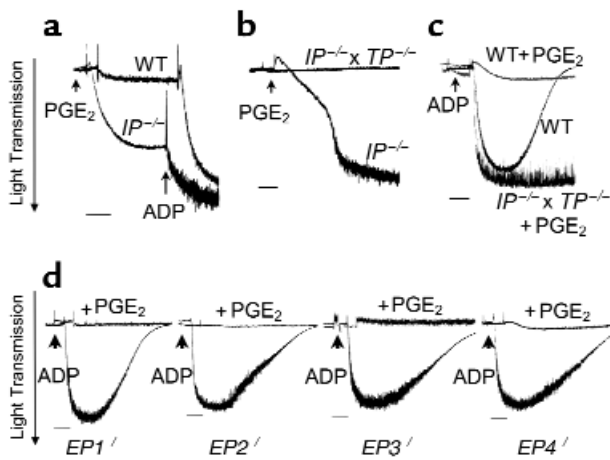
We then examined the mechanism by which high concentrations of PGE<sub>2</sub> inhibit platelet aggregation. To determine the role of the EP receptors in the inhibitory effect of PGE<sub>2</sub> at higher concentrations (10<sup>-4</sup> M), we again isolated platelets from mice deficient in each of the four PGE<sub>2</sub> receptors and strain-matched control animals. As shown in Figure 3, 6 × 10<sup>-4</sup> M PGE<sub>2</sub> completely inhibited the ability of ADP to induce platelet aggregation of wild-type platelets (Figure 3a) and of platelets deficient in each of the EP receptors (Figure 3d).

As already discussed here, activation of the IP receptor has long been recognized to exert a strong inhibito-



**Figure 2**

The PGE<sub>2</sub>-induced potentiation of aggregation is mediated by the EP3 receptor. Comparison of PGE<sub>2</sub> (10<sup>-7</sup> M) mediated potentiation of aggregation induced by U46619 (1 μM; indicated by the letter "U") treatment of wild-type platelets (WT) and platelets deficient for each of the prostaglandin receptors. PGE<sub>2</sub>-induced potentiation is observed in all the samples, with the exception of those lacking the EP3 receptor. Bars = 1 minute. Similar results were obtained on three consecutive experiments, and representative traces are shown. The maximal aggregation induced by PGE<sub>2</sub> treatment of EP receptor-deficient platelets in each experiment was calculated, and the mean was compared with similarly treated wild-type platelets. A significant difference (unpaired *t* test; *P* < 0.01) was observed only on comparison of the EP3-deficient platelet with wild-type controls.



**Figure 3**

The PGE<sub>2</sub>-induced inhibition of aggregation is mediated by the IP receptor. (a) PGE<sub>2</sub> (10<sup>-4</sup> M) alone is sufficient to induce aggregation of IP-deficient platelets, but not wild-type platelets. Further aggregation observed upon addition of ADP reveals that the response to PGE<sub>2</sub> in IP-deficient platelets is submaximal. (b) PGE<sub>2</sub> (10<sup>-4</sup> M) induced aggregation of IP-deficient platelets. The failure to observe aggregation of platelets deficient in both the IP and the TP receptors under similar conditions suggests that high concentrations of PGE<sub>2</sub> induced aggregation through the TP receptor. (c) PGE<sub>2</sub> (6 × 10<sup>-4</sup> M) fails to abolish ADP (5 μM) induced aggregation in platelets lacking both the IP and TP receptors. (d) Comparison of aggregation induced by 5 μM ADP in the presence and absence of 6 × 10<sup>-4</sup> M PGE<sub>2</sub>, in platelets deficient in each of the EP receptors. Bars = 1 minute. Three experiments were carried out, and representative traces from these experiments are shown. Differences observed on comparison of the mean maximal aggregation for the various genotypes (a–c) or between PGE<sub>2</sub>-treated and untreated samples (d) are significant ( $P < 0.01$ ; unpaired *t* test).

ry effect on platelet aggregation (24). We therefore carried out experiments to determine whether this receptor might contribute to PGE<sub>2</sub>-mediated inhibition. As depicted in Figure 3, 10<sup>-4</sup> M PGE<sub>2</sub> alone induced aggregation in IP-deficient platelets, unmasking for the first time a third activity of PGE<sub>2</sub> on platelets (Figure 3a). Moreover, the addition of ADP further stimulated this aggregation response.

Given that the inhibitory effect of prostacyclin in platelets might be countered by thromboxane, among other mediators, we considered the possibility that high concentrations (>10<sup>-4</sup> M) of PGE<sub>2</sub> might indirectly or directly activate the receptor for thromboxane (TP). To prevent thromboxane production, platelets were treated with the COX-inhibitor indomethacin. Under these conditions, 10<sup>-4</sup> M PGE<sub>2</sub> alone still induced aggregation (data not shown). This result suggests that the response of platelets to PGE<sub>2</sub> results from a direct and nonspecific activation of the TP receptor. To address this question, we generated mice with combined deficiency of both the IP and TP receptors. As shown in Figure 3b, in contrast to platelets that are deficient in IP receptors alone, PGE<sub>2</sub> failed to induce aggregation of IP-deficient platelets

that also lacked the TP receptor. This provides direct evidence that at concentrations above 10<sup>-4</sup> M, PGE<sub>2</sub> can activate the TP receptor, and in the absence of the IP receptor this activation leads to platelet aggregation. The observation that PGE<sub>2</sub> alone was sufficient to induce aggregation only in the absence of the IP receptor suggests that the IP receptor mediates the inhibitory effect of high concentrations of PGE<sub>2</sub> on aggregation of wild-type platelets. To examine this possibility, we tested the ability of PGE<sub>2</sub> to inhibit ADP-induced aggregation of platelets deficient in both IP and TP receptors. In this case, 10<sup>-4</sup> M PGE<sub>2</sub> did not inhibit aggregation in response to ADP (Figure 3c). Taken together, these data indicate that PGE<sub>2</sub> mediates its inhibitory effects on platelet aggregation through activation of the IP receptor.

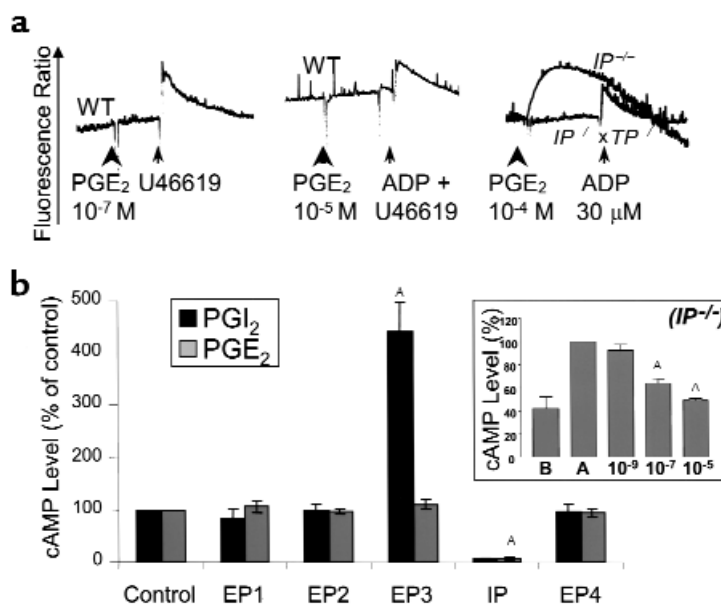
We next examined the signaling mechanism used by PGE<sub>2</sub> to mediate these various effects on platelet physiology. Among the EP receptors, the EP3 receptor is unique in that multiple EP3 isoforms are generated by alternative splicing, and these isoforms couple to different G proteins (11, 12, 25). These include G<sub>q</sub>, which drives mobilization of internal calcium stores (26), and G<sub>s</sub> or G<sub>i</sub>, which regulates intracellular levels of cAMP. We first determined whether treatment of platelets with PGE<sub>2</sub> alters intracellular calcium levels (Figure 4a). Exposure of wild-type platelets to concentrations of PGE<sub>2</sub> from 10<sup>-5</sup> to 10<sup>-7</sup> M had no effect on intracellular calcium levels, whereas subsequent stimulation of these same platelets with U46619 induced a brisk calcium signal. In contrast, 10<sup>-4</sup> M PGE<sub>2</sub> increased calcium levels in IP-deficient platelets under the same experimental condition. However, this calcium signal was not observed in platelets deficient for both IP and TP receptors that were exposed to 10<sup>-4</sup> M PGE<sub>2</sub>. These data suggest that PGE<sub>2</sub>-induced calcium signaling in IP-deficient platelets is due to activation of the thromboxane receptor.

Previous studies have suggested that the intracellular level of cAMP in platelets plays a key role in determining their propensity for aggregation (27). For example, inhibition of platelet aggregation by G<sub>s</sub>-coupled receptors such as the IP receptor is associated with increased intracellular cAMP levels (20). Thus, we reasoned that if the inhibitory actions of higher concentrations of PGE<sub>2</sub> are mediated by the activation of the IP receptor, they should be associated with stimulation of intracellular cAMP. We therefore determined whether, similarly to prostacyclin, PGE<sub>2</sub> modifies platelet aggregation by altering cAMP levels. As seen in Figure 4b, and consistent with the results already described here, loss of the EP1, EP2, or EP4 receptor did not alter intracellular cAMP levels when compared with strain- and age-matched controls. In contrast, EP3-deficient platelets exposed to 5 × 10<sup>-5</sup> M PGE<sub>2</sub> elicited a marked elevation of intracellular cAMP, and IP-deficient platelets failed to increase intracellular cAMP in response to PGE<sub>2</sub> or to prostacyclin. These results support a model in which PGE<sub>2</sub> alters platelet function through inhibition of

adenylate cyclase activity, and not through a direct mobilization of intracellular calcium. We next determined whether PGE<sub>2</sub> stimulation of the EP3 receptor could inhibit cAMP levels induced by agents in addition to prostacyclin. Platelets express the adenosine A<sub>2a</sub> receptor, and activation of this G<sub>s</sub> coupled receptor has been shown to be responsible for adenosine-mediated increases in cAMP levels (28). As shown in Figure 4 (inset), PGE<sub>2</sub> treatment decreased cAMP levels in platelets pretreated with adenosine in a dose-dependent manner. We suggest that the concentration of PGE<sub>2</sub> in the local environment modifies the intracellular level of cAMP, which in turn determines the response of the platelets to aggregating agents. Current literature suggests that the intracellular concentration of cAMP determines the extent of PKA activation, which is one pathway for regulating the availability of cytosolic calcium and phosphorylation of myosin (29–32). Consistent with this model, platelets isolated from wild-type mice partially aggregated in response to 5 μM ADP in the presence of 8 × 10<sup>-5</sup> M PGE<sub>2</sub>. Under the same conditions, platelets from *Ip*<sup>-/-</sup> × *Tp*<sup>-/-</sup> mice (low cAMP level) fully aggregated, whereas platelets lacking *Ep3*<sup>-/-</sup> receptors (high cAMP level) did not respond (Figure 5a).

We next sought to determine whether the role of the EP3 receptor in modifying the response of platelets could be observed in vivo. We first examined the effect of loss of EP3 on bleeding time. Using two different protocols, we found no difference in the bleeding time between wild-type and EP3-deficient mice when measured by section of 1 cm of the tail (7.09 ± 4.09 minutes [*n* = 7] vs. 8.17 ± 1.44 minutes [*n* = 10]) or when measured by section of 3 mm of the tail immersed in saline (70 ± 18 seconds [*n* = 5] vs. 84 ± 19 seconds [*n* = 5]). We reasoned that the lack of any apparent role for EP3 receptors in primary hemostasis might reflect low levels of PGE<sub>2</sub> in these conditions. Furthermore, we suggest that the ability of the EP3 receptor to modulate platelet function might be more prominent in situations such as in inflammatory lesions or conditions in which PGE<sub>2</sub> production is stimulated. We further reasoned that PGE<sub>2</sub>-mediated modulation of platelet function might be particularly important in veins, given that after exposure to arachidonic acid, veins produce PGE<sub>2</sub> in excess of PGI<sub>2</sub> (33). To mimic such conditions, we induced thrombosis by application of arachidonic acid to the periadventitial region of the vein. Within 3 hours in wild-type mice, periadventitial delivery of arachidonic acid caused significant intravascular

clot formation without major alteration of blood flow (Figure 5, b and c). In this model, thrombus formation results from stimulation of the COX pathways. The inability of eicosatrienoic acid, a 20-carbon lipid with a chemical structure very similar to arachidonic acid, to induce thrombosis suggests that thrombus formation in this model depends on formation of metabolites of arachidonic acid (data not shown). Also, thrombus formation could be blocked by indomethacin treatment, which suggests that arachidonic acid induces thrombosis through the production of prostanoids (data not shown). To further characterize this model, we examined thrombus formation in mice lacking the TP and



**Figure 4**

Effects of PGE<sub>2</sub> on cytosolic calcium and cAMP levels. (a) Absence of internal calcium mobilization upon treatment of wild-type platelets with 10<sup>-7</sup> and 10<sup>-5</sup> M PGE<sub>2</sub>. Change in fluorescence upon subsequent addition of 10 μM U46619 demonstrated that these platelets were able to mobilize their internal calcium stores. After exposure to 10<sup>-5</sup> M PGE<sub>2</sub>, platelets did not respond strongly to 30 μM ADP because of the inhibitory effect of high PGE<sub>2</sub> concentration on calcium mobilization. PGE<sub>2</sub> (10<sup>-4</sup> M) induced calcium mobilization in *IP*-deficient, but not in *IP*- and *TP*-deficient platelets. Experiments examining calcium mobilization in wild-type platelets were repeated five times. Experiments examining calcium mobilization in *Ip*<sup>-/-</sup> and *Ip*<sup>-/-</sup> × *Tp*<sup>-/-</sup> platelets were repeated four times, and similar results were observed in all experiments. A representative trace is shown. (b) Effects of 5 × 10<sup>-5</sup> M PGE<sub>2</sub> and 7 × 10<sup>-9</sup> M PGI<sub>2</sub> on accumulated cAMP production in each of the receptor-deficient mouse lines compared with their age- and strain-matched controls. Values were normalized to the cAMP level obtained in appropriate control animals (DBA for *Ep1*<sup>-/-</sup>, 129 for *Ep2*<sup>-/-</sup>, *Ep3*<sup>-/-</sup>, and *Ip*<sup>-/-</sup>, and mixed background for *Ep4*<sup>-/-</sup> mice), and the bars represent the mean of the percent change observed in four experiments (each bar graph represents the values obtained from 16 mice). Error bars = SEM. <sup>A</sup>Significant difference: *P* < 0.01 (ANOVA test, and Dunnett as post test). Inset: effect of increasing concentration of PGE<sub>2</sub> on cAMP level elevated by treatment of platelets of *IP*-deficient platelets with 10<sup>-5</sup> M adenosine. Bar A (inset), the cAMP level in platelets treated with 10<sup>-5</sup> M adenosine was set at 100%; Bar B (inset), cAMP level in untreated platelets. The remaining bars indicate the percentage of maximal cAMP observed in platelets treated with 10<sup>-5</sup> M adenosine and the indicated amount of PGE<sub>2</sub> (10<sup>-9</sup>, 10<sup>-7</sup>, and 10<sup>-5</sup> M). Three experiments were carried out. Error bars = SEM. <sup>A</sup>Significant difference: *P* < 0.01 (ANOVA test, and Dunnett as post test).

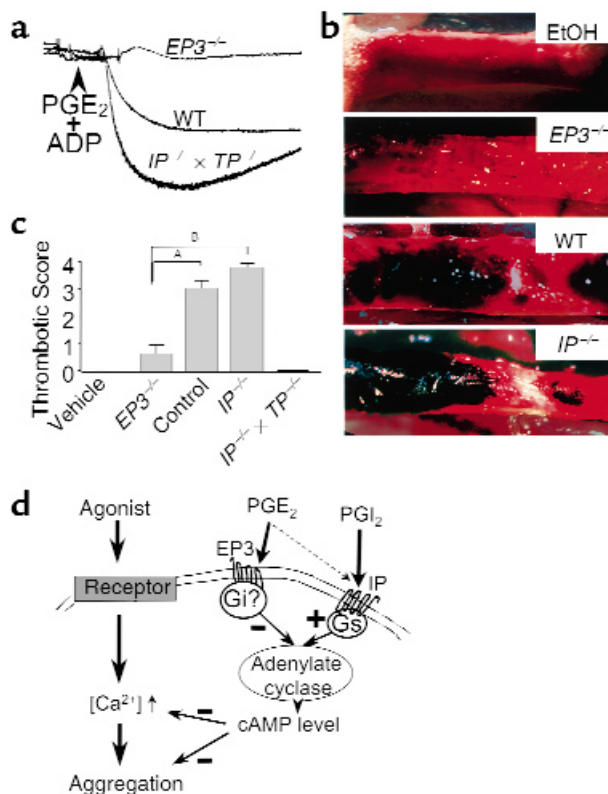
### Figure 5

Ex vivo and in vivo implications for PGE<sub>2</sub> modulation of cAMP platelet content. (a) Wild-type platelets collected on sodium citrate exposed to  $8 \times 10^{-5}$  M PGE<sub>2</sub>, then treated with 5  $\mu$ M ADP did not display a full aggregation (intermediate trace). The PGE<sub>2</sub> concentration used was similar to that used for studies described in Figure 4b. In the same experimental conditions, *Ep3*<sup>-/-</sup> platelets, which have higher intracellular cAMP levels, do not aggregate (upper trace). By contrast, platelets lacking the receptor for prostacyclin and thus containing lower cAMP levels aggregated maximally (lower trace). Similar results were obtained in two consecutive experiments. (b) Photomicrographs of venous thrombosis in vivo, induced by periadventitial application of arachidonic acid. Shown are the effect of vehicle (ethanol, EtOH), and the effect induced by arachidonic acid in EP3-deficient, wild-type, and IP-deficient mice.  $\times 15$ . (c) Thrombotic scores in EP3-deficient, wild-type, IP-deficient, and IP- and TP-deficient mice. Thrombosis was scored as follows: 0, no apparent thrombus; 1, small and isolated thrombus; 2, mural thrombi; 3, partially occlusive thrombi; 4, occlusive thrombi. The scores were 0 in wild-type veins treated with vehicle ( $n = 6$ ) or in *Ip*<sup>-/-</sup>  $\times$  *Tp*<sup>-/-</sup> veins ( $n = 10$ ). Errors bars = SEM. Data were analyzed using a Kruskal-Wallis test followed by Dunn's tests. This showed significant differences between *Ep3*<sup>-/-</sup> mice ( $0.60 \pm 0.34$ ;  $n = 14$ ), and control ( $3.00 \pm 0.32$ ;  $n = 18$ ) or *Ip*<sup>-/-</sup> mice ( $3.75 \pm 0.17$ ;  $n = 16$ ). <sup>a</sup> $P < 0.01$ . <sup>b</sup> $P < 0.001$ . (d) Proposed model for the role of cAMP in platelets exposed to prostaglandins. PGE<sub>2</sub> preferentially stimulates the EP3 receptor, resulting in a decrease in adenylate cyclase activity and opposing the stimulatory effect induced by the IP receptor. The resulting cAMP level in platelets affects both calcium mobilization and aggregation induced by these agents.

IP receptors: no thrombi were observed in these animals after periadventitial delivery of arachidonic acid. Thrombus formation was enhanced in IP-deficient mice, leading to total obstruction and interruption of vascular flow. In contrast, thrombus formation was almost completely abolished in EP3-deficient mice. The absence of thrombosis in the EP3-deficient mice suggests that PGE<sub>2</sub> produced during inflammatory processes may enhance thrombosis by activating the EP3 receptor, thereby opposing prostacyclin-mediated increases in cAMP. In this model, the opposing effects of PGE<sub>2</sub> and PGI<sub>2</sub> might modulate the amplitude of the platelet response to proaggregatory agents, such as thromboxane and ADP (Figure 5c).

### Discussion

Using a series of mice deficient in prostanoid receptors, we show that the reported ability of PGE<sub>2</sub> to inhibit platelet activation does not result from activation of the G<sub>s</sub>-coupled EP4 or EP2 receptors. In fact, this activity can be attributed to activation of the prostacyclin receptor at high PGE<sub>2</sub> concentrations. In contrast, the ability of PGE<sub>2</sub> to potentiate platelet activation is mediated by activation of a PGE<sub>2</sub> receptor, the EP3 receptor. In addition, we show that PGE<sub>2</sub> is unable to induce aggregation alone and potentiates platelet activation induced by other agonists through regulation of intracellular cAMP levels. Although EP3-deficient mice do not display increased bleeding times in a venous model of arachidonic acid induced inflammation, we show that mice deficient in the EP3 receptor are resistant to thrombus formation.



The ability of agents that increase intracellular cAMP levels to inhibit platelet aggregation has long been recognized. The ability of PGE<sub>2</sub> and PGE<sub>1</sub> to inhibit platelet aggregation was believed to be due to activation of adenylate cyclase by these agents (19, 20). Cloning and characterization of the PGE<sub>2</sub> receptors revealed three receptors capable of coupling to G<sub>s</sub> proteins: the EP2 receptor, the EP4 receptor, and some isoforms of the EP3 receptor (9). This raised the possibility that these receptors might mediate the inhibitory action of PGE<sub>2</sub>. We show here, however, that in mouse platelets the inhibitory actions of PGE<sub>2</sub> are not affected by loss of the EP2, EP4, or EP3 receptor. Only loss of the IP receptor affected the ability of PGE<sub>2</sub> to inhibit platelet aggregation. To observe this difference, it was first necessary to generate platelets that were deficient in both the IP- and the TP-receptors, owing to the unexpected observation that high concentrations of PGE<sub>2</sub> are able to activate the TP receptor. In the absence of inhibitory IP-mediated signals, PGE<sub>2</sub> activation of the TP receptor leads to platelet aggregation. Based on the concentration needed for the PGE<sub>2</sub>-induced inhibitory effect ( $>10^{-4}$  M), this pathway is not expected to contribute extensively to the regulation of platelet activation in vivo.

The physiologically relevant action of PGE<sub>2</sub> on platelet aggregation is likely to be related to the ability of low concentrations of PGE<sub>2</sub> ( $<10^{-6}$  M) to increase markedly the sensitivity of platelets to aggregating agents. We show here that this action is dependent on expression of the EP3 receptor. As already discussed

here, the EP3 receptor is capable of coupling to a number of different G proteins. Our studies show that in platelets, EP3 receptor activation does not lead to measurable changes in intracellular calcium. Instead, consistent with the coupling of the EP3 receptor to  $G_i$ , exposure of *Ep3*<sup>-/-</sup> platelets to PGE<sub>2</sub> leads to an IP-mediated increase in intracellular level of cAMP. Our demonstration that PGE<sub>2</sub> potentiates platelet aggregation by decreasing cAMP level through EP3 provides an explanation for previous pharmacological studies showing that in some circumstances, PGE<sub>2</sub> could decrease cAMP levels (34). Our results also are consistent with the suggestions that two separate receptors coupled to adenylate cyclase are activated in the response to PGE<sub>1</sub>, a common ligand for IP and EP (20, 35, 36). In summary, PGE<sub>2</sub> can now be added to a growing number of mediators, including epinephrine and ADP, which modulate platelet aggregation by regulating intracellular levels of cAMP. It is likely that these pathways provide a means of linking this homeostatic response to other ongoing physiological responses in the organism.

Pharmacological studies suggest that the response of human and mouse platelets to prostanoids are very similar. For example, in platelets of both species, prostacyclin is a potent inhibitor of platelet aggregation including the response to thromboxane. Similar to our results with mouse platelets, PGE<sub>2</sub> has been shown to enhance the response of human platelets to aggregating agents *in vitro* (19, 20, 37). PCR analysis of RNA prepared from purified platelets indicates that human platelets express high levels of both EP3 and the  $G_s$ -coupled EP4 receptors, leading to speculation that these receptors might mediate the opposing actions of PGE<sub>2</sub> (10). Although our studies do not identify a role for the EP4 receptor in cAMP production, they clearly show that activation of the EP3 receptor opposes the actions of the  $G_s$ -coupled IP receptors in platelets. In both human and mouse platelets, the primary stimulus for increases in cAMP is likely to be through activation of IP. The ability of EP3 to oppose the protective functions of IP and enhance platelet aggregation should have a potent impact on thrombus formation in diseases.

While circulating levels of prostanoids are extremely low in healthy individuals (38), the local concentration of PGE<sub>2</sub> can dramatically increase in inflammatory states. For example, the local production of PGE<sub>2</sub> was shown *in vitro* to increase more than 30-fold in aortoiliac occlusive disease (39). It is, therefore, plausible that chronically inflamed vessels produce sufficient quantities of PGE<sub>2</sub> to activate EP3 receptors on platelets. In this environment, the intracellular events triggered by activation of the EP3 receptor may enhance platelet aggregation by opposing the effects of PGI<sub>2</sub> and enhancing the effects of primary aggregating agents such as ADP. EP3 receptor activation may therefore contribute to the thrombosis observed in pathological states such as vasculitis and atherosclerosis.

## Acknowledgments

The authors thank V.A. Wagoner for assistance with animal husbandry, M. Verghese for assistance in the measurement of calcium, S. Tilley for the EP2-deficient mice, and J. Snouwaert for reviewing the manuscript. This work was supported in part by a grant from the NIH (HL-58554 to B.H. Koller) and by a grant from the American Heart Association (9920376U to J.-E. Fabre).

- Smith, W.L. 1986. Prostaglandin biosynthesis and its compartmentation in vascular smooth muscle and endothelial cells. *Annu. Rev. Physiol.* **48**:251-262.
- Bishop-Bailey, D., et al. 1997. Induction of cyclooxygenase-2 in human saphenous vein and internal mammary artery. *Arterioscler. Thromb. Vasc. Biol.* **17**:1644-1648.
- Bishop-Bailey, D., Pepper, J.R., Larkin, S.W., and Mitchell, J.A. 1998. Differential induction of cyclooxygenase-2 in human arterial and venous smooth muscle: role of endogenous prostanoids. *Arterioscler. Thromb. Vasc. Biol.* **18**:1655-1661.
- Mitchell, J.A., Larkin, S., and Williams, T.J. 1995. Cyclooxygenase-2: regulation and relevance in inflammation. *Biochem. Pharmacol.* **50**:1535-1542.
- Stemme, V., Swedenborg, J., Claesson, H., and Hansson, G.K. 2000. Expression of cyclo-oxygenase-2 in human atherosclerotic carotid arteries. *Eur. J. Vasc. Endovasc. Surg.* **20**:146-152.
- Brock, T., McNish, R., and Peters-Golden, M. 1999. Arachidonic acid is preferentially metabolized by cyclooxygenase-2 to prostacyclin and prostaglandin E<sub>2</sub>. *J. Biol. Chem.* **274**:11660-11666.
- Matsumoto, H., et al. 1997. Concordant induction of prostaglandin E<sub>2</sub> synthase with cyclooxygenase-2 leads to preferred production of prostaglandin E<sub>2</sub> over thromboxane and prostaglandin D<sub>2</sub> in lipopolysaccharide-stimulated rat peritoneal macrophages. *Biochem. Biophys. Res. Commun.* **230**:110-114.
- Thomas, D., et al. 1998. Coagulation defects and altered hemodynamic response in mice lacking receptors for thromboxane A<sub>2</sub>. *J. Clin. Invest.* **102**:1994-2001.
- Narumiya, S., Sugimoto, A., and Ushikubi, F. 1999. Prostanoid receptors: structures, properties, and functions. *Physiol. Rev.* **79**:1193-1226.
- Paul, B.Z.S., Ashby, B., and Sheth, S.B. 1998. Distribution of prostaglandin IP and EP receptor subtypes and isoforms in platelets and human umbilical artery smooth muscle cells. *Br. J. Haematol.* **102**:1204-1211.
- Irie, A., et al. 1993. Third isoform of the prostaglandin E-receptor EP3 subtype with different C-terminal tail coupling to both stimulation and inhibition of adenylate cyclase. *Eur. J. Biochem.* **217**:313-318.
- Irie, A., Segi, E., Sugimoto, Y., Ichikawa, A., and Negishi, M. 1994. Mouse prostaglandin E receptor EP3 subtype mediates calcium signals via  $G_i$  in cDNA-transfected Chinese hamster ovary cells. *Biochem. Biophys. Res. Commun.* **204**:303-309.
- Tilley, S., et al. 1999. Reproductive failure and reduced blood pressure in mice lacking the EP2 prostaglandin E<sub>2</sub> receptor. *J. Clin. Invest.* **103**:1539-1545.
- Fleming, E.F., et al. 1998. Urinary concentrating function in mice lacking EP3 receptors for prostaglandin E<sub>2</sub>. *Am. J. Physiol.* **275**:F955-F961.
- Nguyen, M., et al. 1997. The prostaglandin receptor EP4 triggers remodeling of the cardiovascular system at birth. *Nature.* **390**:78-81.
- Egan, K., Austin, S., Smyth, E., and FitzGerald, G. 2000. Accelerated atherogenesis in prostacyclin receptor deficient mice. *Circulation.* **102**(Suppl. 2):176. (Abstr.)
- Dejana, E., Callioni, A., Quintana, A., and de Gaetano, G. 1979. Bleeding time in laboratory animals. II. A comparison of different assay conditions in rats. *Thromb. Res.* **15**:191-197.
- Murata, T., et al. 1997. Altered pain perception and inflammatory response in mice lacking prostacyclin receptor. *Nature.* **388**:678-681.
- Shio, H., and Ramwell, P. 1972. Effect of prostaglandin E<sub>2</sub> and aspirin on the secondary aggregation of human platelets. *Nature.* **236**:45-46.
- Gray, J., and Heptinstall, S. 1991. Interactions between prostaglandin E<sub>2</sub> and inhibitors of platelet aggregation which act through cyclic AMP. *Eur. J. Pharmacol.* **194**:63-70.
- Veza, R., Roberti, R., Nenci, G.G., and Gesele, P. 1993. Prostaglandin E<sub>2</sub> potentiates platelet aggregation by priming protein kinase C. *Blood.* **82**:2704-2713.
- Coleman, R., Smith, W., and Narumya, S. 1994. Classification of prostanoid receptors: properties, distribution, and structure of the receptor and their subtypes. *Pharmacol. Rev.* **46**:205-228.
- Armstrong, R. 1996. Platelet prostanoid receptors. *Pharmacol. Ther.* **72**:171-191.



24. Bunting, S., Gryglewski, R., Moncada, S., and Vane, J.R. 1976. Arterial walls generate from prostaglandin endoperoxides a substance (prostaglandin X) which relaxes strips of mesenteric and coeliac arteries and inhibits platelet aggregation. *Prostaglandins*. **12**:897–913.
25. Schmid, A., Thierauch, K., Schleuning, W., and Dinter, H. 1995. Splice variants of the human EP3 receptor for prostaglandin E2. *Eur. J. Biochem.* **228**:23–30.
26. Offermanns, S., Toombs, C.F., Hu, Y.H., and Simon, M.I. 1997. Defective platelet activation in  $G\alpha_q$ -deficient mice. *Nature*. **389**:183–186.
27. Weber, A., Hohlfeld, T., and Schror, K. 1999. cAMP is an important messenger for ADP-induced platelet aggregation. *Platelets*. **10**:238–241.
28. Ledent, C., et al. 1997. Aggressiveness, hypoalgesia and high blood pressure in mice lacking the adenosine A2a receptor. *Nature*. **388**:674–678.
29. Hettasch, J.M., and Le Breton, G.C. 1987. Modulation of  $Ca^{2+}$  fluxes in isolated platelet vesicles: effects of cAMP-dependent protein kinase and protein kinase inhibitor on  $Ca^{2+}$  sequestration and release. *Biochim. Biophys. Acta*. **931**:49–58.
30. Enouf, J., et al. 1987. Relationship between cAMP and  $Ca^{2+}$  fluxes in human platelet membranes. *Biochimie*. **69**:297–304.
31. Enouf, J., Giraud, F., Bredoux, R., Bourdeau, N., and Levy-Toledano, S. 1987. Possible role of a cAMP-dependent phosphorylation in the calcium release mediated by inositol 1,4,5-trisphosphate in human platelet membrane vesicles. *Biochim. Biophys. Acta*. **928**:76–82.
32. Nakamura, K., Kimura, M., and Aviv, A. 1995. Role of cyclic nucleotides in store-mediated external  $Ca^{2+}$  entry in human platelets. *Biochem. J.* **310**:263–269.
33. Skidgel, R., and Printz, M. 1978. PGI2 production by rat blood vessels: diminished prostacyclin formation in veins compared to arteries. *Prostaglandins*. **16**:1–16.
34. Andersen, N., Eggerman, L., Harker, L., Wilson, C., and Biswanath, D. 1980. On the multiplicity of platelet prostaglandin receptors. I. Evaluation of competitive antagonism by aggregometry. *Prostaglandins*. **19**:713–735.
35. Ashby, B. 1988. Cyclic AMP turnover in response to prostaglandins in intact platelets: evidence for separate stimulatory and inhibitory prostaglandin receptors. *Second Messengers Phosphoproteins*. **12**:45–47.
36. Ashby, B. 1994. Interactions among prostaglandin receptors. *Receptor*. **4**:31–42.
37. MacIntyre, D., and Gordon, J. 1975. Calcium-dependent stimulation of platelet aggregation by PGE2. *Nature*. **258**:337–339.
38. FitzGerald, G.A., Brash, A.R., Falardeau, P., and Oates, J.A. 1981. Estimated rate of prostacyclin secretion into the circulation of normal man. *J. Clin. Invest.* **68**:1272–1275.
39. Reilly, J., Miralles, M., Wester, W., and Sicard, G. 1999. Differential expression of prostaglandin E2 and interleukin-6 in occlusive and aneurysmal aortic disease. *Surgery*. **126**:624–628.