

***Salmonella typhimurium* induces epithelial IL-8 expression via Ca²⁺-mediated activation of the NF-κB pathway**

Andrew T. Gewirtz, ... , James L. Madara, Andrew S. Neish

J Clin Invest. 2000;105(1):79-92. <https://doi.org/10.1172/JCI8066>.

Article

Interactions between the enteric pathogen *Salmonella typhimurium* and the luminal surface of the intestine provoke an acute inflammatory response, mediated in part by epithelial cell secretion of the chemokine IL-8 and other proinflammatory molecules. This study investigated the mechanism by which this pathogen induces IL-8 secretion in physiologically polarized model intestinal epithelia. IL-8 secretion induced by both the prototypical proinflammatory cytokine TNF-α and *S. typhimurium* was NF-κB dependent. However, NF-κB activation and IL-8 secretion induced by *S. typhimurium*, but not by TNF-α, was preceded by and required an increase in intracellular [Ca²⁺]. Additionally, agonists that increased intracellular [Ca²⁺] by receptor-dependent (carbachol) or independent (thapsigargin, ionomycin) means also induced IL-8 secretion. Furthermore, the ability of *S. typhimurium* mutants to induce IκB-α degradation, NF-κB translocation, and IL-8 transcription and secretion correlated precisely with their ability to induce an intracellular [Ca²⁺] increase in model intestinal epithelia, but not with their ability to invade these cells. Finally, *S. typhimurium*, but not TNF-α, induced a Ca²⁺-dependent phosphorylation of IκB-α. These results indicate that *S. typhimurium*-induced activation of NF-κB-dependent epithelial inflammatory responses proceeds by a Ca²⁺-mediated activation of an IκB-α kinase. These observations raise the possibility that pharmacologic intervention of the acute inflammatory response can be selectively matched to the specific class of initiating event.

Find the latest version:

<https://jci.me/8066/pdf>



***Salmonella typhimurium* induces epithelial IL-8 expression via Ca²⁺-mediated activation of the NF-κB pathway**

Andrew T. Gewirtz, Anjali S. Rao, Peter O. Simon, Jr., Didier Merlin, Denice Carnes, James L. Madara, and Andrew S. Neish

Epithelial Pathobiology Unit, Department of Pathology and Laboratory Medicine, Emory University School of Medicine, Atlanta, Georgia 30322, USA

Address correspondence to: Andrew S. Neish, Department of Pathology, Room 2337, Woodruff Memorial Research Building, Emory University School of Medicine, 1639 Pierce Drive, Atlanta, Georgia 30322, USA. Phone: (404) 727-8545; Fax: (404) 727-8538; E-mail: aneish@emory.edu.

Received for publication August 4, 1999, and accepted in revised form November 23, 1999.

Interactions between the enteric pathogen *Salmonella typhimurium* and the luminal surface of the intestine provoke an acute inflammatory response, mediated in part by epithelial cell secretion of the chemokine IL-8 and other proinflammatory molecules. This study investigated the mechanism by which this pathogen induces IL-8 secretion in physiologically polarized model intestinal epithelia. IL-8 secretion induced by both the prototypical proinflammatory cytokine TNF-α and *S. typhimurium* was NF-κB dependent. However, NF-κB activation and IL-8 secretion induced by *S. typhimurium*, but not by TNF-α, was preceded by and required an increase in intracellular [Ca²⁺]. Additionally, agonists that increased intracellular [Ca²⁺] by receptor-dependent (carbachol) or independent (thapsigargin, ionomycin) means also induced IL-8 secretion. Furthermore, the ability of *S. typhimurium* mutants to induce IκB-α degradation, NF-κB translocation, and IL-8 transcription and secretion correlated precisely with their ability to induce an intracellular [Ca²⁺] increase in model intestinal epithelia, but not with their ability to invade these cells. Finally, *S. typhimurium*, but not TNF-α, induced a Ca²⁺-dependent phosphorylation of IκB-α. These results indicate that *S. typhimurium*-induced activation of NF-κB-dependent epithelial inflammatory responses proceeds by a Ca²⁺-mediated activation of an IκB-α kinase. These observations raise the possibility that pharmacologic intervention of the acute inflammatory response can be selectively matched to the specific class of initiating event.

J. Clin. Invest. 105:79–92 (2000).

Introduction

The mammalian intestinal epithelium is a highly specialized tissue that must maintain complex selective secretory and absorptive functions while interfacing with the external environment of the intestinal lumen (1). Particularly in the colon, the epithelium exists within a diverse ecology of microflora, which, under normal conditions, contribute to the physiology of the lower gut. The intestinal epithelial cells, or enterocytes, have evolved highly selective physical, chemical, and immunological barriers to permit this mutually beneficial co-existence. Despite such adaptations a subset of enteric organisms have evolved a variety of mechanisms to surmount these barriers, disturb the host-prokaryotic equilibrium, and presumably acquire a selective advantage. Luminal pathogens, such as *Vibrio cholerae*, secrete enterotoxins that result in physiologic alterations of the gut mucosa via receptor-mediated events (2). Other organisms are termed enteroinvasive, as they are able to adhere, invade, and disseminate systemically or, alternatively, proliferate within the enterocyte (e.g., *Salmonella*, *Shigella*, and *Yersinia* spp.). An important representative of this latter group is *Salmonella typhimurium*, a causative agent of acute enteritis (3). Acute enteritis caused by food- or water-borne *S.*

typhimurium is manifested clinically by severe cramping and secretory diarrhea and is one of the most common causes of infectious gastroenteritis in the United States (2). The resulting dehydration can be fatal, especially in the absence of medical treatment.

Infection of human epithelia by *S. typhimurium* leads to recruitment and subsequent transepithelial migration of polymorphonuclear leukocytes (PMNs) (reviewed in refs. 4 and 5), resulting in a luminal acute inflammatory infiltrate that is the pathologic hallmark of this infection. Recent work with model cultured epithelial systems has begun to elucidate the molecular mechanisms by which salmonellae induce inflammatory colitis. The epithelial cells do not merely comprise a passive barrier but play an active role in orchestrating this process, particularly by secreting inflammatory mediators that direct PMN movement. One key mediator is the C-X-C chemokine IL-8 (6–9), an 8.5-kDa peptide that has well-studied properties as a neutrophil-specific chemotactic agent. IL-8 is rapidly induced at the transcriptional level, as is the case for most chemokines. In response to inflammatory stimuli, intestinal epithelial cells secrete IL-8 into the basolateral (serosal) matrix. We and others have demonstrated that *S. typhimurium* interactions with model intestinal

epithelia result in de novo induction of IL-8 mRNA (10) and subsequent distribution of IL-8 within the underlying matrix, forming a long-lasting haptotactic gradient that guides PMNs to subepithelial space (11).

Although epithelial IL-8 induction in response to bacterial stimuli has been observed in a number of laboratories, the mechanism by which this activation occurs is not well understood. The goal of this study was thus to elucidate the signaling events by which *S. typhimurium* induces transcriptional activation of the IL-8 gene. Past analysis of the determinants of inducibility of the IL-8 promoter revealed a critical role for the transcription factor NF- κ B, with modifying roles variously attributed to the AP-1 and C/EBP β transcription factors (12–16). Many cell types, including epithelial cells, utilize NF- κ B as a rapidly inducible transcriptional activator in response to immune and proinflammatory signals, and NF- κ B has been implicated in the upregulation of numerous immunomodulatory genes (reviewed in refs. 17–19). NF- κ B activation has been observed in response to *S. typhimurium* in nonpolarized cells, and its binding sites have been shown to be essential for expression of IL-8 promoter reporter constructs (20). However, the mechanism by which this pathogen activates NF- κ B is not yet characterized. In response to proinflammatory cytokines, NF- κ B is activated by a well-characterized post-translational pathway. In quiescent cells, the dimeric NF- κ B is sequestered in the cytoplasm by a class of specific inhibitor proteins, I κ Bs. In most cases, activating stimuli results in phosphorylation of I κ B, which targets this protein for polyubiquitination and proteasomal degradation, thus allowing release and nuclear translocation of the active DNA-binding dimer. We first asked whether such mechanisms also mediated NF- κ B activation in model intestinal epithelia in response to *S. typhimurium* and then investigated what early bacterial-induced signals could lead to this activation. Increased intracellular [Ca²⁺] has been associated with *S. typhimurium* invasion of cultured eukaryotic cells (21, 22). Because calcium mobilization is a widely used signaling mechanism and has been reported to influence NF- κ B activation (23, 24), we asked whether epithelial cell Ca²⁺ mobilization in response to *S. typhimurium* might play a role in NF- κ B activation and subsequent IL-8 secretion. We report that the ability of *S. typhimurium* strains to elicit changes in intracellular [Ca²⁺] strictly correlates with their ability to induce proinflammatory signals from, but not to invade, model intestinal epithelia. These results indicate that the critical proinflammatory signals from an important pathogen are the result of this novel NF- κ B activating pathway.

Methods

Cell and bacterial culture. Confluent monolayers of T84 cells, referred to as model intestinal epithelia, were grown as described previously (25). HT-29 cl/19A epithelial cells were also maintained as described previously (25). *S. typhimurium* strains (χ 3306-wild-type), HilA, and *S. typhimurium* PhoP^c (invasion defective

strains) were maintained and prepared for use (via overnight growth under nonagitated microaerophilic conditions) as described previously (11). *Escherichia coli* F-18 was a gift of E. McCormick (Harvard Medical School, Boston, Massachusetts, USA).

Drug treatments. To chelate intracellular [Ca²⁺], model intestinal epithelia were treated with 15 μ M BAPTA-AM (Molecular Probes Inc., Eugene, Oregon, USA) for 45 minutes before the addition of a stimulating agonist. This treatment was in HBSS with reduced [Ca²⁺] (0.25 mM CaCl₂ instead of 1.25 mM CaCl₂). This reduced [Ca²⁺] allowed maintenance of epithelial tight junctions, yet permitted effective Ca²⁺ chelation while avoiding the very high BAPTA concentrations, which can acidify cells (26). MG-132 (Calbiochem-Novabiochem Corp., San Diego, California, USA) was used at 50 μ M in DMSO, and cells were pretreated for 1 hour. Recombinant human TNF- α (R&D Systems Inc., Minneapolis, Minnesota, USA), carbachol, forskolin, cycloheximide, and thapsigargin (Sigma Chemical Co., St. Louis, Missouri, USA), ionomycin (Calbiochem-Novabiochem), were added as described in the figure legends.

IL-8 secretion. IL-8 secretion from model intestinal epithelia was measured as described previously (8, 10, 27). Briefly, model intestinal epithelia (resistance > 800 Ω ·cm²) were washed 3 times with HBSS and placed into 300 μ L of HBSS. Thirty minutes later, agonists were added. Recombinant human TNF- α , carbachol, thapsigargin, ionomycin, and forskolin were added basolaterally. *S. typhimurium* was added apically by placing model epithelia in empty wells and adding 25 μ L of *S. typhimurium*-containing HBSS (1.6 \times 10¹⁰ bacteria/mL) to the apical surface. This inoculum has been previously shown to correspond to 30 associated bacteria per T84 cell (8). Thirty minutes later, the model epithelia were returned to the same HBSS in which they had incubated before the addition of *S. typhimurium*. Five hours after the addition of agonist, T84 cell supernatants were removed and assayed for IL-8 via a sandwich ELISA as described previously (10).

Transient transfection. Transient transfections and assay of chloramphenicol acetyl transferase (CAT) in HT-29 cl/19A cells were carried out by a modified CaPO₄ method as described previously (28). The reporter constructs span +23 to -578 of the human IL-8 promoter as described in ref. 13. Cell lysates were prepared 6 hours after addition of agonist.

Determination of intracellular calcium. Polycarbonate sheets (1.7-mm thick) were machined to precisely fit diagonally across standard fluorescence cuvettes (Sarstedt, Newton, North Carolina, USA) and included a 1.0 \times 1.5 cm window cut out of the polycarbonate to incorporate the area targeted by the excitation beam of a Hitachi (Sunnyvale, California, USA) F-4500 fluorescence spectrometer. Transparent polyester filters (Corning Materials, Corning, New York, USA) (0.4 μ M pore size) were mounted over the window and coated with 2 mg collagen (added in 200 μ L ethanol). T84 cells were plated on these filters at high density (10⁵/cm²)

and allowed 7–10 days to become a confluent polarized model intestinal epithelia. These cells and filter apparatus were then washed 3× in HBSS, and placed into HBSS containing 5 μM Fura-2-acetoxymethylester (AM; Molecular Probes) for 60 minutes at 37°C, followed by 3 more washes. The bottom and side edges of the polycarbonate piece were then coated with vacuum grease, and the assembly was placed into a fluorescence cuvette. One milliliter of HBSS was subsequently placed into the basolateral reservoir of the model intestinal epithelia. After verifying the integrity of the grease seal by demonstrating that the HBSS did not visibly leak over to the apical aspect, 1 mL of HBSS was added to the apical reservoir of this model epithelia. This Fura-2-loaded model epithelia was then incubated for an additional 10 minutes to permit diffusional washout of Fura-2 sequestered in the extracellular spaces. The HBSS (both apical and basolateral) was then aspirated out and fresh HBSS added (1 mL to each aspect) without disturbing the grease seal.

Fura-2 loaded epithelia were placed into a spectrofluorometer (thermostated to 37°C) such that the apical surface faced (at a 45° angle) the excitation beam. A 4-mm stir bar (8-mm stirbar cut in half; Fisher Scientific Co., Pittsburgh, Pennsylvania, USA) was then placed in the aspect (apical or basolateral) that was to receive addition of an agonist. Fluorescence emission was read at 505 nm while the excitation wavelength was changed between 340 nm and 380 nm 4 times per second via Intracellular Cation software (Hitachi). After reading fluorescence for 3–5 minutes, *S. typhimurium* or other agonists were added as indicated

in the figure legends. For additions of bacteria, 50 μL of a culture containing 1.6×10^{10} CFU/mL was added.

Values of intracellular $[Ca^{2+}]_i$ were calculated via the Grynciewicz equation $(R-R_{min})/(R_{max}-R) \cdot K_d$ which was taken to be 2.54×10^{-7} M. R_{max} and R_{min} were measured by adding digitonin (10 μM) and then EGTA (20 mM), respectively, to Fura-2-loaded model epithelia. Fura-2 leakage that occurred over the course of the $[Ca^{2+}]_i$ measurement was assessed and corrected for by adding EGTA (20 mM) at the end of the measurement and subtracting the changes in fluorescence that immediately (within 2 seconds) resulted. The leakage was assumed to have occurred at a uniform rate during the measurement. We did not observe a significant difference in leakage between epithelia that were treated with bacteria or with only buffer. The autofluorescence of the bacteria as well as changes in autofluorescence of the model epithelia that were induced by the bacteria were measured in non-Fura-2-loaded epithelia and subsequently corrected for by subtraction. To increase the signal/noise ratio of our measurement, the fluorescence values were averaged to produce 1 ratio value and thus 1 value for intracellular $[Ca^{2+}]_i$ every 2 seconds.

Northern hybridization. Model intestinal epithelia were treated with cytokine or bacteria as already described here. Total RNA was extracted with TRIzol reagent (GIBCO BRL, Gaithersburg, Maryland, USA) and was analyzed by Northern hybridization analysis as described elsewhere (28). Equal loading of mRNA was demonstrated by ethidium bromide staining or probing for GAPDH. Blots were hybridized with ^{32}P -labeled cDNA probes encoding IL-8.

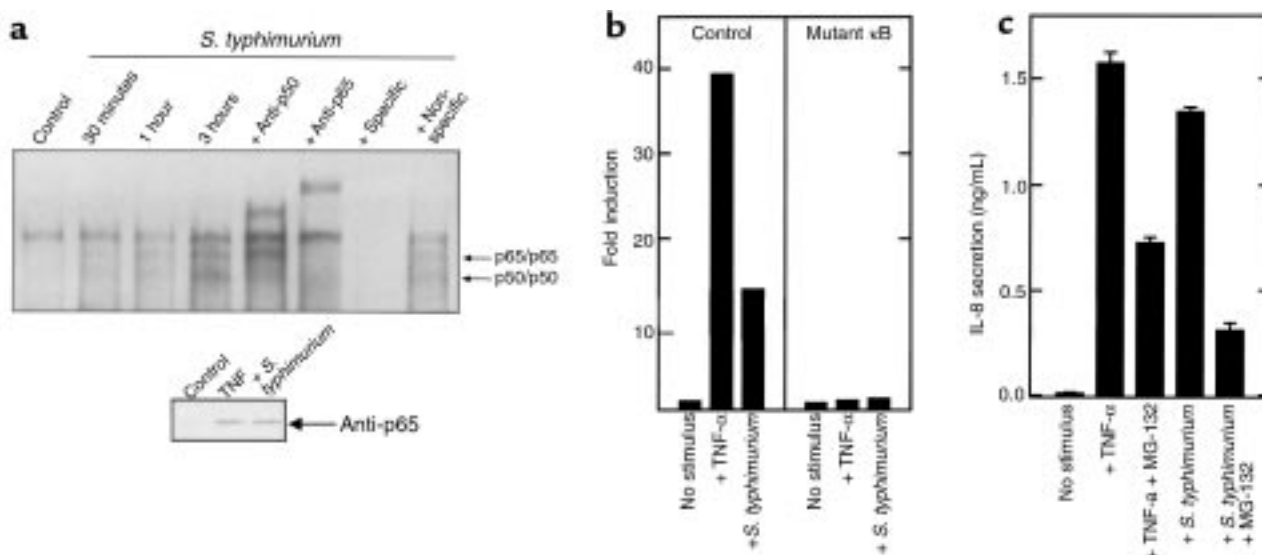


Figure 1

S. typhimurium and TNF-α induce IL-8 expression by an NF-κB-mediated mechanism. (a) EMSAs with an IL-8 NF-κB motif probe. Nuclear extracts were derived from model intestinal epithelia maintained under control conditions or coincubated with wild-type *S. typhimurium* as described in Methods for the indicated times. Addition of unlabeled competitor probe or antisera when indicated. Inset: nuclear extracts were Western blotted with anti-p65 as described in Methods. (b) Transient transfection assay with IL-8 reporter constructs. Transfected HT-29 c19A cells were treated as indicated. Data are reported as fold induction of CAT activity over basal. (c) IL-8 ELISA from model epithelia. Cells were incubated with basolateral TNF-α (10 ng/mL) or apical wild-type *S. typhimurium*, either with or without 1 hour pretreatment with 50 μM MG-132. Basolateral IL-8 secretion was measured 5 hours later.

Western blots. After experimental treatment, model epithelia (3×10^7 to 5×10^7 cells) were washed in cold HBSS and harvested by scraping. Whole cell extracts from T84 cells were prepared by rapid lysis in SDS loading buffer. Western blots were performed as described previously (28). Anti-I κ B- α antisera (Santa Cruz Biotechnology Inc., Santa Cruz, California, USA), anti-p65 (Rockland Immunochemicals, Gilbertsville, Pennsylvania, USA), and anti-phospho-I κ B- α (New England Biolabs Inc., Beverly, Massachusetts, USA) were used at a 1:1,000 dilution.

Immunoreactive proteins were detected according to the enhanced chemiluminescent protocol (Amersham Life Sciences Inc., Arlington Heights, Illinois, USA) using 1:1,000 horseradish peroxidase-linked goat anti-rabbit secondary antiserum. Blots were exposed to film for 1–5 minutes.

Electrophoretic mobility shift assay. After experimental treatment, model epithelia (3×10^7 to 5×10^7 cells) were washed in cold HBSS and harvested by scraping. Cytoplasmic and nuclear extract preparation and binding reactions were performed as described elsewhere (28), with additional wash steps of isolated nuclei to remove potential contamination with cytoplasmic proteins. Competition studies were performed by adding unlabeled double-stranded oligonucleotides to the binding reaction for 10 minutes before the addition of labeled oligonucleotide. For supershift analysis, nuclear extracts from the *S. typhimurium*-treated epithelial cells were incubated with 1 μ L of antisera for 15 minutes at room temperature before addition of binding buffer containing labeled oligonucleotide. Oligonucleotides utilized are as follows: IL8 RE 5'-TTCATCAGTTGCAAATCGTGAATTTCTTCTCTGGCTA; VCAM-IRF 5'-GGAGTGAAATAGAAAGTCTGTG. Reverse complement strands were designed to leave GATC overhangs on both ends. All oligonucleotides were polyacrylamide gel purified prior to annealing and labeling.

***S. typhimurium* adherence assay.** *S. typhimurium* adherence to the apical aspect of model epithelia was measured as described previously (8) except that the current experiments used inverted epithelia to prevent bacteria from contacting and subsequently adhering to the plastic portion of the cell culture inserts.

Results

Both TNF- α and *S. typhimurium* induce IL-8 secretion by an NF- κ B-mediated mechanism. Extensive literature exists implicating the transcriptional activator NF- κ B with the induced transcription of the IL-8 gene in response to inflammatory cytokines. Thus, we sought to define the role of NF- κ B in regulating *S. typhimurium*-induced IL-8 secretion in model intestinal epithelia. We used electrophoretic mobility shift assays (EMSAs) to determine whether interactions of *S. typhimurium* with the physiologic apical surface of model intestinal epithelial could induce NF- κ B translocation. For these experiments, a double-stranded oligonucleotide spanning the

IL-8 NF- κ B motif was used to probe nuclear extracts derived from model intestinal epithelia treated with *S. typhimurium* or TNF- α (Figure 1a). The probe used in these studies corresponded to the sequence spanning from -67 to -97 on the human IL-8 promoter, the site of a distinctive motif divergent from typical κ B motifs (TGGAATTTCC versus the canonical GGGANNTTCC), which has been demonstrated to interact with a specific NF- κ B form (homodimeric p65) (12). Resting cells showed no NF- κ B binding activity, whereas model epithelia exposed to *S. typhimurium* showed induction of 2 nucleoprotein complexes within 30 minutes, with maximum induction seen within 3 hours. TNF- α applied basolaterally resulted in the appearance of identical nucleoprotein complexes that were seen within 15 minutes, were maximal at 1 hour, and which declined slightly by 3 hours (data not shown). In all experiments, a low mobility, constitutively present band was seen.

To identify the nucleoprotein complexes, supershift analysis was performed on the nucleoprotein complexes formed on the IL-8 NF- κ B site in response to stimulation with *S. typhimurium* for 3 hours. Addition of antisera to the NF- κ B component p50 completely supershifted the higher mobility complex, whereas addition of anti-p65 antibody resulted in supershift of both inducible complexes. Furthermore, the presence of 100-fold molar excess of specific probe resulted in the abolition of the inducible bands (as well as a constitutive lower mobility complex), whereas 100-fold molar excess of an unrelated sequence had no effect. We were able to demonstrate the same 3 specific nucleoprotein complexes in other intestinal epithelial cell lines (CACO-2-BBE and HT-29 cl/19A) and generate equivalent supershift patterns with several independent anti-NF- κ B antisera (data not shown). EMSA experiments with probes containing consensus NF- κ B motifs verified binding of the predicted heterodimeric p50/p65 and homodimeric p50/p50 (data not shown). Immunoblots with nuclear and cytoplasmic extracts confirms the inducible appearance of NF- κ B p65 in the nucleus of epithelial cells treated with TNF- α or *S. typhimurium* (Figure 1a, inset). From these experiments, we conclude that *S. typhimurium* induces specific NF- κ B DNA binding activity of both p50/p65 heterodimers and p65/p65 homodimers.

Having characterized the NF- κ B activation that occurs in model intestinal epithelia in response to *S. typhimurium*, we next investigated whether this activation was necessary for induction of IL-8 secretion. Using transient transfection assays we found that both *S. typhimurium* and TNF- α induced expression of an IL-8 promoter-CAT reporter gene construct; however, an identical construct bearing a mutation in the NF- κ B motif at position -72 could not be induced by either agonist (Figure 1b). This indicates that an intact NF- κ B binding motif is necessary for IL-8 activation by either agonist. To investigate further the requirement of NF- κ B activation for IL-8 secretion, we used the cell permeable peptide aldehyde MG-132, which blocks the catalytic activity of the 26 S proteasome subunit, abrogating the cells ability to degrade I κ B isoforms and thus

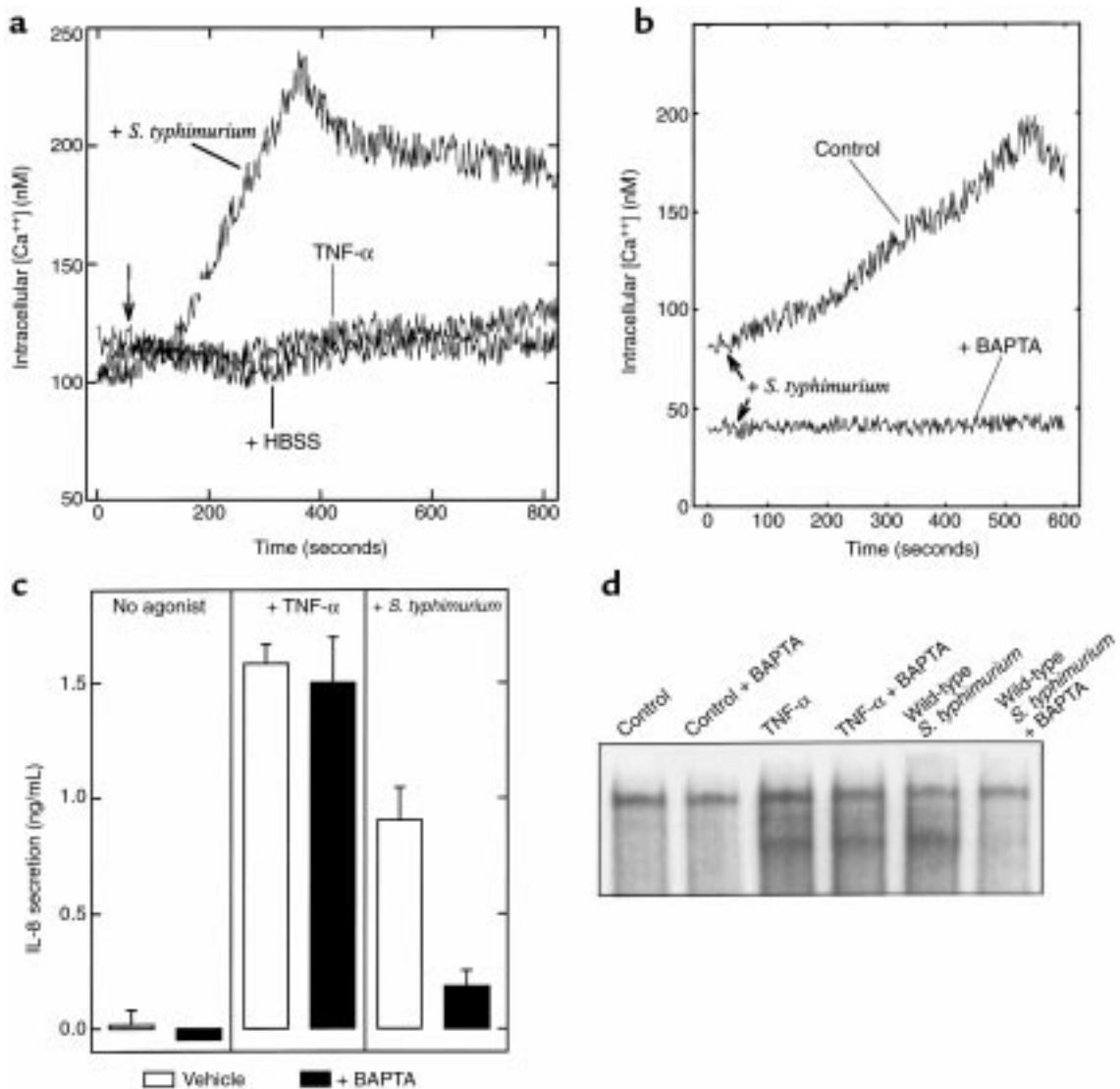


Figure 2

S. typhimurium, but not TNF- α , induce Ca²⁺ mobilization that is required for NF- κ B activation and IL-8 secretion. (a, b) Fluorometric assay of intracellular calcium. Model intestinal epithelia were loaded with the Ca²⁺ indicator Fura-2 and placed in a thermostated spectrofluorometer and intracellular Ca²⁺ was measured as described in Methods. TNF- α was added basolaterally or *S. typhimurium* was added apically as indicated. In b, intracellular [Ca²⁺] was measured in response to *S. typhimurium* in the absence or presence of intracellular BAPTA, which was simultaneously loaded with Fura-2. (c) IL-8 ELISA. Model intestinal epithelia were stimulated basolaterally with TNF- α or infected apically with *S. typhimurium* in the presence (filled bars) or absence (open bars) of 15 μ M BAPTA. Basolateral IL-8 secretion was measured 5 hours later. (d) EMSA with IL-8 probe. Model intestinal epithelia were treated as in c. After stimulation (30 minutes for TNF- α ; 1 hour for *S. typhimurium*), nuclear extracts were isolated and NF- κ B translocation assessed as described in Methods.

activate NF- κ B (29, 30). Pretreatment of model intestinal epithelia with this inhibitor reduced IL-8 secretion induced by either *S. typhimurium* or TNF- α , implying that proteasomal catalysis, known to be required for NF- κ B activation, was necessary for the IL-8 secretory activity induced by both stimuli (Figure 1c). Taken together, these observations indicate that NF- κ B is necessary for IL-8 secretion in response to *S. typhimurium*, as well as TNF- α , in polarized intestinal epithelial cells.

S. typhimurium-mediated, but not TNF- α -mediated, NF- κ B activation and IL-8 secretion requires an increase in intracellular [Ca²⁺]. We next sought to identify the signals

induced by apically applied *S. typhimurium* that were responsible for NF- κ B activation and subsequent IL-8 secretion. Because *S. typhimurium* induces a [Ca²⁺] influx in nonpolarized cells (21), we tested whether this occurred in response to bacterial interaction with the apical membrane of polarized cells and, if so, whether such [Ca²⁺] signals might mediate NF- κ B activation and subsequent IL-8 secretion in response to *S. typhimurium*. We thus developed a system (see Methods) of measuring intracellular [Ca²⁺] in model intestinal epithelia in which *S. typhimurium* access could be restricted to the apical surface. To verify that this system provided limit-

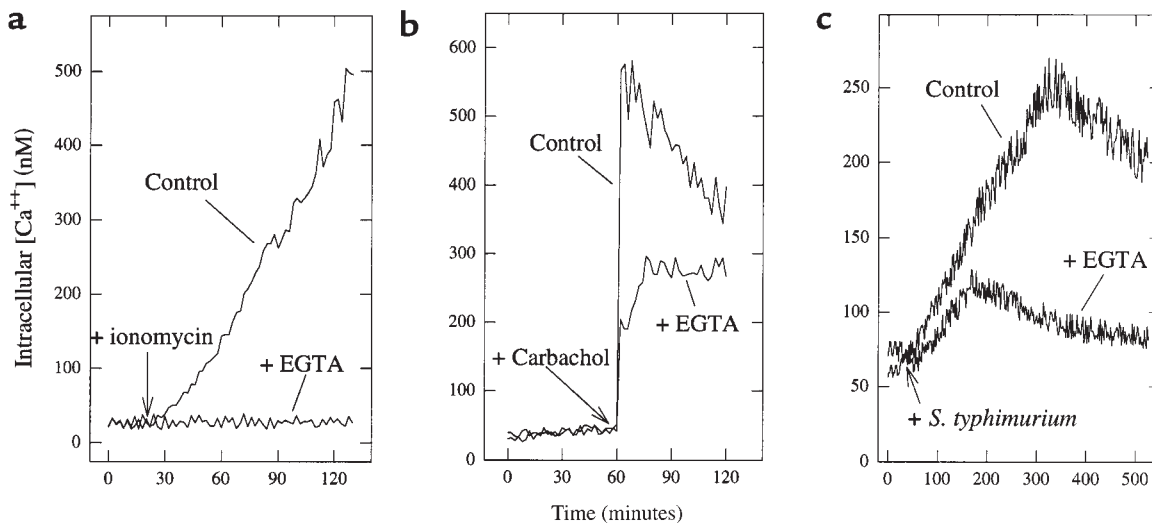


Figure 3

Chelation of extracellular Ca^{2+} indicates *S. typhimurium*-induced $[\text{Ca}^{2+}]$ increase results from both intracellular stores and Ca^{2+} influx. Fluorometric assays of intracellular calcium. Intracellular $[\text{Ca}^{2+}]$ was measured in Fura-2-loaded model intestinal epithelia in response to (a) ionomycin (1 $\mu\text{g}/\text{mL}$), (b) carbachol (100 μM), or (c) *S. typhimurium* in the presence or absence of EGTA (5 mM), which was added 10 seconds before the addition of an agonist.

ed polarized access, we measured changes in intracellular $[\text{Ca}^{2+}]$ in response to addition of carbachol (100 μM) added either apically or basolaterally. When added basolaterally, carbachol induced an intracellular $[\text{Ca}^{2+}]$ increase of more than 500 nM, whereas carbachol added apically was without effect. As the receptor used by this agonist (the acetylcholine receptor) is only found on the basolateral aspect of intestinal epithelial cells (31), this result indicates our model system provided the limited access these studies required.

We next performed a control experiment that had important effects on the calculations of $[\text{Ca}^{2+}]$ changes. Specifically, we measured whether *S. typhimurium* induced Fura-2 leakage from Fura-2-loaded model epithelia and whether the autofluorescence of model epithelia not loaded with this agent exhibited changes in response to *S. typhimurium* that would significantly affect the Fura-2 ratio (λ_{ex} , 340 nm/380 nm; λ_{em} , 505 nm). Although there was detectable Fura-2 leakage from model epithelia (which, when occurring into a Ca^{2+} -containing buffer, causes an increase in the Fura-2 340/380 ratio), neither the rate nor amount of leakage was different from control and *S. typhimurium*-treated epithelia. Therefore, we simply subtracted the fluorescence changes due to this leakage as described in Methods). However, in the absence of Fura-2, we did observe significant fluorescence changes in the autofluorescence of *S. typhimurium* and model epithelia. These changes occurred about 1 minute after the addition of the bacteria to the epithelia and, somewhat surprisingly, occurred as a quick step rather than a slow drift. This increase in autofluorescence was observed at excitation $\lambda = 340$ nm but not $\lambda = 380$ nm, thus increasing the Ca^{2+} -sensitive ratio, thereby potentially enabling investigators to misconstrue this change in autofluorescence for an increase in intracellular $[\text{Ca}^{2+}]$. We hypothesize

this change in autofluorescence is due to shape changes in the epithelial cells and/or the bacteria. In calculating values of intracellular $[\text{Ca}^{2+}]$, we corrected for such artifacts by subtraction of the autofluorescence of non-Fura-2-loaded model epithelia. That our reported changes in intracellular $[\text{Ca}^{2+}]$ include such corrections may be one possible reason some of our results regarding stimulus-induced changes in intracellular $[\text{Ca}^{2+}]$ differ somewhat from those reported by Pace et al. (21).

Having defined our ability to measure intracellular $[\text{Ca}^{2+}]$ in polarized model epithelia, we used this system to measure intracellular $[\text{Ca}^{2+}]$ in response to *S. typhimurium*. Apically applied *S. typhimurium* induced an increase in intracellular $[\text{Ca}^{2+}]$ within 1 minute that peaked at about 4 minutes and declined slowly thereafter but did not return to baseline during the remainder of our measurements (Figure 2a). In contrast, no changes in intracellular $[\text{Ca}^{2+}]$ were observed in response to TNF- α even though this cytokine elicits similar (or greater) levels of NF- κB activation and IL-8 secretion as *S. typhimurium* (Figure 1c). TNF- α did not prevent Ca^{2+} mobilization as TNF- α -treated epithelia that were subsequently exposed to *S. typhimurium* exhibited changes in intracellular $[\text{Ca}^{2+}]$ that were indistinguishable from model epithelia treated with *S. typhimurium* alone (data not shown). To determine whether the observed increase in intracellular $[\text{Ca}^{2+}]$ played a role in mediating *S. typhimurium* elicitation of an inflammatory response, experiments were performed with the Ca^{2+} chelator BAPTA. Preloading model intestinal epithelia with the chelator prevented any detectable increase in free intracellular $[\text{Ca}^{2+}]$ in response to *S. typhimurium* (Figure 2b) and resulted in abolition of the IL-8 secretory response to *S. typhimurium* (Figure 2c). In contrast, BAPTA loading had no effect on IL-8 secretion induced by TNF- α . In addition,

EMSA demonstrated that calcium chelation specifically abolished *S. typhimurium*-induced NF- κ B activation, while having no effect on NF- κ B activation induced by TNF- α (Figure 2d). This marked differential effect of Ca²⁺ chelation on TNF- α and *S. typhimurium* induced activation of this proinflammatory pathway was observed at several time points of stimulation and over a range of concentrations of BAPTA (data not shown). These 2 pathways may be able to act additively to induce inflammation, as *S. typhimurium* and TNF- α together induced more IL-8 secretion than either agonist alone (*S. typhimurium*, 10 ng/mL TNF- α , and *S. typhimurium* + 10 ng/mL TNF- α induced 1.55 \pm 0.20, 1.25 \pm 0.25, and 2.56 \pm 0.6 ng/mL IL-8, respectively). Further, TNF- α -treated epithelia (20 ng/mL, 15 minutes) that were subsequently treated with *S. typhimurium* exhibited [Ca²⁺] increases indistinguishable from those exhibited by epithelia treated with *S. typhimurium* only. Together, these results indicate that an increase in intracellular [Ca²⁺] is part of the signaling pathway by which *S. typhimurium*, but not TNF- α , activates proinflammatory events in model intestinal epithelia.

Next, we sought to better characterize the increase in intracellular [Ca²⁺] observed in response to *S. typhimurium*. We did not observe any increase in intracellular [Ca²⁺] when model intestinal epithelia were treated with either *S. typhimurium* supernatants (at concentrations of at least 5 \times those in our live cultures) or heat-killed *S. typhimurium* (by incubation at 70°C for 30 minutes; data not shown). These experiments indicated that elicitation of this signaling event requires epithelial contact with intact *S. typhimurium*. We next sought to temporally resolve Ca²⁺ mobilization and *S. typhimurium* adherence. At 30 seconds after addition of the bacteria, there were on average 3.96 \pm 0.5 specifically adhered bacteria per epithelial cell. Bacterial adherence continued to increase slowly for as long as we measured, with 12.12 \pm 0.5 bacteria adhered per epithelial cell at 45 minutes. However, there was no significant difference in IL-8 secretion (5 hours after exposure to bacteria) from epithelia exposed to *S. typhimurium* for 30 seconds or 45 minutes (105 \pm 8% for 30 seconds compared with 45 minutes). Therefore, by the time the

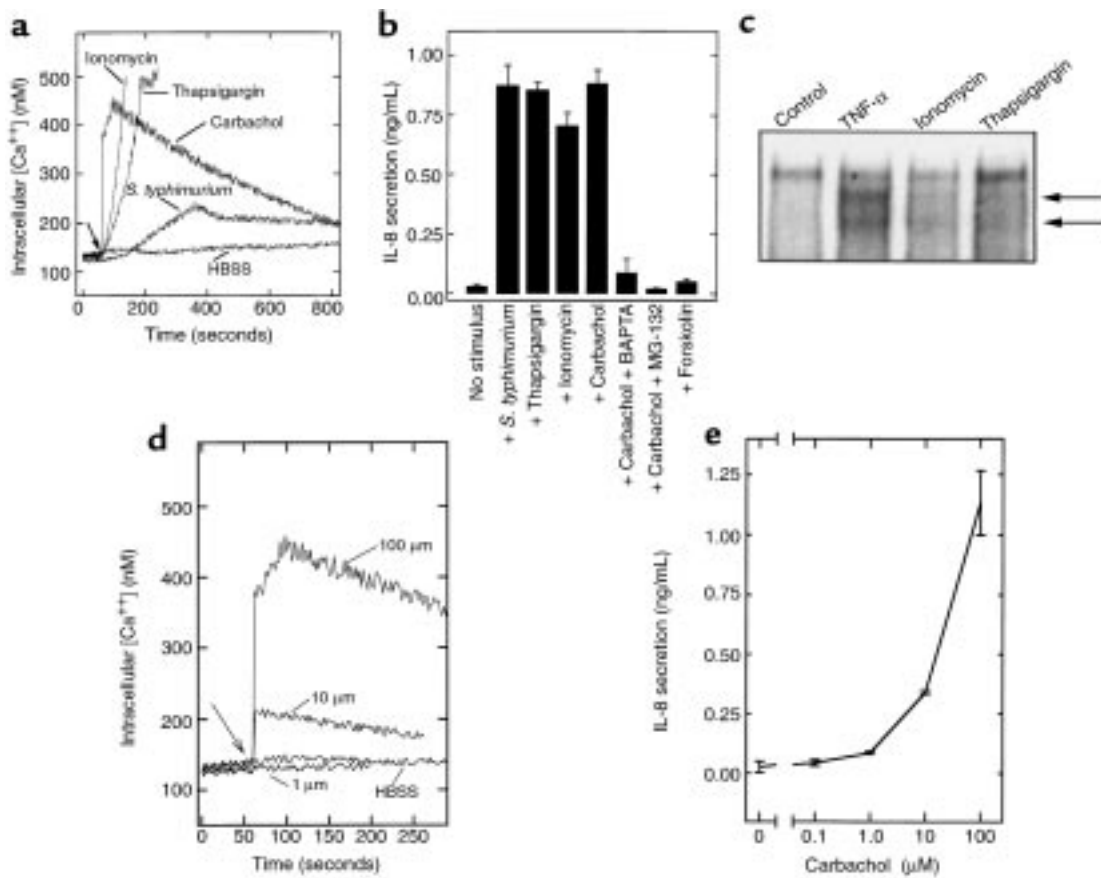


Figure 4

Stimuli that induce an increase in intracellular [Ca²⁺] elicit IL-8 secretion. (a) Fluorometric assays of intracellular [Ca²⁺]. Intracellular [Ca²⁺] was measured in Fura-2-loaded model intestinal epithelia in response to *S. typhimurium*, thapsigargin (10 μ M), ionomycin (1 μ g/mL), carbachol (100 μ M), or forskolin (10 μ M). (b) IL-8 ELISA. Five hours after addition of the agonist, basolateral IL-8 secretion was measured by ELISA. BAPTA (added in AM form) and MG-132 were used when indicated as described in Methods. (c) EMSA with IL-8 κ B probe. Model epithelia were treated with TNF- α , ionomycin (1 μ g/mL) or thapsigargin (10 μ M) for 1 hour before extract preparation. NF- κ B complexes are indicated with arrows. (d) Intracellular [Ca²⁺] and (e) IL-8 secretion, in response to the indicated dose of carbachol.

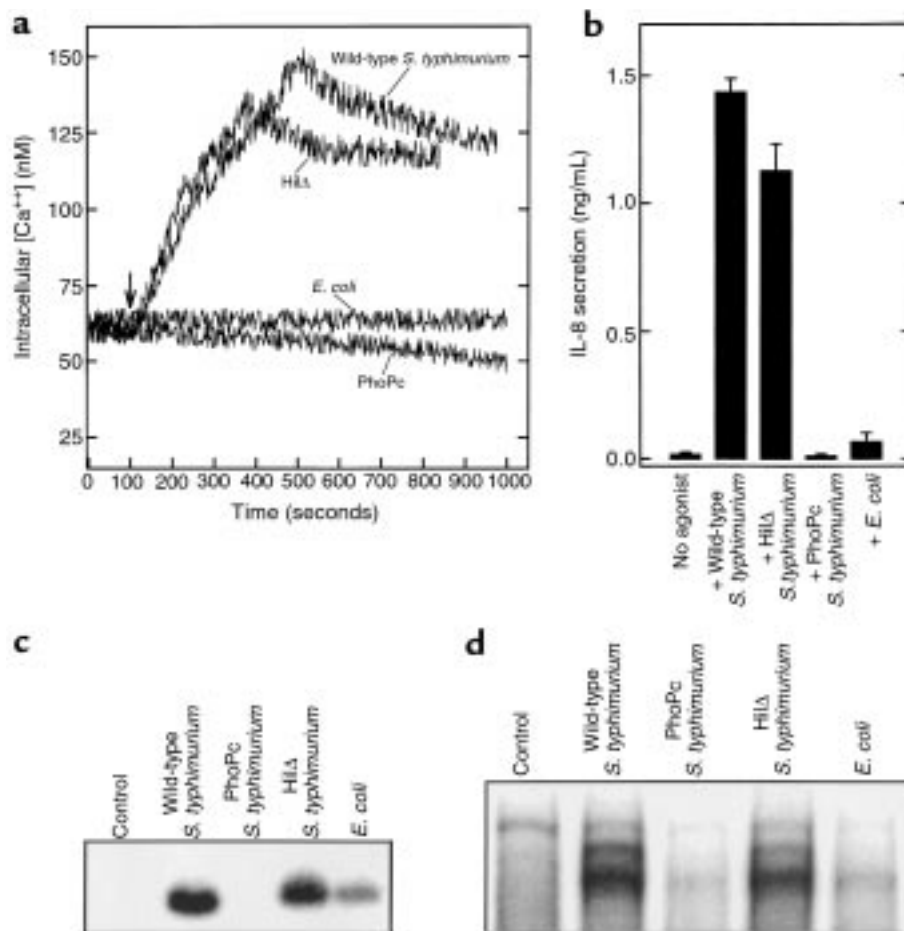


Figure 5

S. typhimurium ability to induce an increase in [Ca²⁺] correlates with its ability to elicit activation of NF-κB and subsequent IL-8 secretion. Model intestinal epithelia were treated with the indicated strain of *S. typhimurium* or a nonpathogenic strain of gut *E. coli*. Bacteria were applied apically. (a) Fluorometric assay of intracellular [Ca²⁺]. (b) IL-8 secretion measured by ELISA. IL-8 was assayed from the basolateral media after 5 hours. (c) Northern blot probed with IL-8. T84 cell mRNA prepared after infection for 5 hours with the indicated organisms. (d) EMSA with IL-8 probe. Nuclear extracts prepared 3 hours after infection.

intracellular [Ca²⁺] had significantly increased, *S. typhimurium* adherence sufficient for maximal epithelial IL-8 secretion had taken place.

To ascertain whether the increase in intracellular [Ca²⁺] results from a Ca²⁺ influx, release from intracellular stores, or both, we measured the effect of adding EGTA to chelate extracellular Ca²⁺ on agonist-induced intracellular [Ca²⁺] increases. As expected, the increase in intracellular [Ca²⁺] induced by ionomycin (resulting from Ca²⁺ influx; see later here) was abolished by EGTA (Figure 3a). The increase in intracellular [Ca²⁺] induced by carbachol is thought to result from release of intracellular stores followed by Ca²⁺ influx (32). Thus, as expected, the carbachol-induced increase in intracellular [Ca²⁺] was reduced but not eliminated by EGTA (Figure 3b). In response to *S. typhimurium*, EGTA also reduced but did not eliminate the increase in intracellular [Ca²⁺] (Figure 3c). The effect of EGTA was likely due to influences on the epithelia rather than the bacteria, as this compound was only added to the basolateral aspect of our model system 10 seconds before the bacteria (kept in

Ca²⁺ containing buffer) were added to the apical aspect. Thus, like carbachol, *S. typhimurium* appears to induce release of both intracellular Ca²⁺ stores and Ca²⁺ influx.

Agonists that increase intracellular [Ca²⁺] induce NF-κB activation and IL-8 secretion in model epithelium. Having demonstrated that increases in intracellular [Ca²⁺] are required for *S. typhimurium*-induced activation of NF-κB and subsequent IL-8 secretion, we next measured whether other well-defined agonists that induce Ca²⁺ mobilization might also elicit these proinflammatory responses. Ionomycin permits extracellular Ca²⁺ to enter cells by facilitated diffusion down a [Ca²⁺] gradient (33). Thapsigargin elevates cytosolic [Ca²⁺] from intracellular stores by inhibiting the endoplasmic reticulum (ER) Ca²⁺-ATPase, thus allowing efflux to the cytoplasm (34). Carbachol initially increases intracellular [Ca²⁺] by activating the acetylcholine receptor that, via a G-protein/phosphatidylinositol-specific phospholipase C-mediated mechanism, causes release of ER Ca²⁺. Each of these agonists was able to elevate intracellular [Ca²⁺] in model epithelia (Figure 4a) and

stimulate IL-8 secretion (Figure 4b). Furthermore, this IL-8 secretion could be ablated by either Ca^{2+} chelation with BAPTA or proteasomal blockade with MG-132 (Figure 4b and data not shown). These agents also cause NF- κB translocation in model epithelia within 1 hour (Figure 4c) as well as in nonpolarized cells (23). Thus, there is a close correlation between increases in intracellular $[\text{Ca}^{2+}]$ and activation of IL-8 secretion by a pathway involving activation of NF- κB .

A number of agonists that induce Ca^{2+} mobilization, including carbachol, activate polarized chloride secretion in model intestinal epithelia. Because such chloride secretion leads to volume (and perhaps other) changes in epithelial cells, we considered the possibility that the activation of IL-8 secretion we observed in response to Ca^{2+} -mobilizing agonists was more directly attributable to chloride secretion than to an increase in intracellular $[\text{Ca}^{2+}]$. However, we found that 10 μM forskolin, which activates chloride secretion to a similar extent as carbachol by a cAMP-mediated Ca^{2+} -independent mechanism (35), did not induce significant levels of IL-8 secretion (Figure 4b), indicating Ca^{2+} -mediated activation of IL-8 secretion is not subsequent to chloride secretion.

We next examined the relationship between receptor-mediated changes in intracellular $[\text{Ca}^{2+}]$ and activation of IL-8 secretion. A dose response to carbachol was measured for both events (Figure 4, d and e). At concentrations of less than 1 μM carbachol, we did not observe a detectable increase in intracellular $[\text{Ca}^{2+}]$ or IL-8 secretion. At 10 μM carbachol, changes in both intracellular $[\text{Ca}^{2+}]$ and IL-8 secretion increased concomitantly to about 30% of the response observed at 100 μM . Higher concentrations of carbachol did not lead to a greater increase in intracellular $[\text{Ca}^{2+}]$ or IL-8 secretion (data not shown). Last, like Ca^{2+} mobilization, carbachol-induced IL-8 mRNA synthesis and secretion were only observed when this agonist was added basolaterally (data not shown). This close correlation between changes in intracellular $[\text{Ca}^{2+}]$ and IL-8 secretion induced in model intestinal epithelia by a receptor-mediated agonist supports the notion that the Ca^{2+}

mobilization observed in response to *S. typhimurium* plays an important role in activating secretion of inflammatory mediators.

The ability of *S. typhimurium* mutants to induce an increase in intracellular $[\text{Ca}^{2+}]$ correlates with their ability to activate NF- κB and elicit IL-8 secretion. To explore further the relationship between *S. typhimurium*-induced changes in intracellular $[\text{Ca}^{2+}]$, NF- κB activation, and IL-8 secretion we used wild-type *S. typhimurium*, nonpathogenic noninvasive gut *E. coli* (F-18, isolated from the feces of a healthy human), and previously characterized invasion-defective *S. typhimurium* mutants PhoP^c and Hil Δ . These mutants adhere normally to model epithelia and show similar inability to invade these cells (27, 36) despite their marked phenotypic differences (37–39). We have recently shown that Hil Δ but not PhoP^c induce IL-8 secretion from model epithelia (27). Here, we investigated whether the ability of these organisms to induce NF- κB activation and subsequently IL-8 synthesis correlated with their ability to elicit changes in intracellular $[\text{Ca}^{2+}]$. Both wild-type *S. typhimurium* and Hil Δ induced an increase in intracellular $[\text{Ca}^{2+}]$ and IL-8 secretion, whereas PhoP^c and *E. coli* F-18 elicited very little of either (Figure 5, a and b). This pattern of induction of IL-8 secretion in response to these different organisms correlated very closely with changes in levels of steady-state IL-8 mRNA (Figure 5c) and nuclear translocation of NF- κB as measured by EMSA (Figure 5d). These observations are consistent with the recent demonstration that *S. typhimurium* invasion is not required for NF- κB activation (40) or IL-8 secretion (27). Thus, among the strains assayed, there is an absolute correlation between a bacterium's ability to elicit Ca^{2+} mobilization, translocate NF- κB , and induce IL-8 transcription and IL-8 secretion. Epithelial cell Ca^{2+} mobilization appears to be an important determinant in whether the intestinal mucosa will initiate an inflammatory response to a particular organism.

The failure of PhoP^c to induce Ca^{2+} mobilization and subsequent NF- κB activation did not result from diminished adherence to our model epithelia, as we

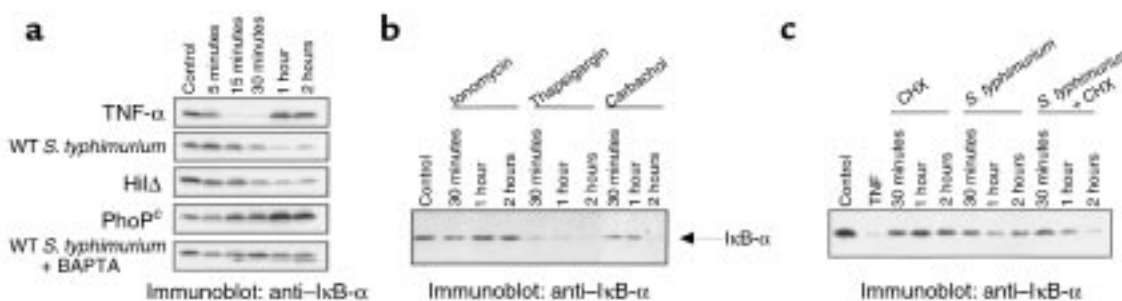


Figure 6

Proinflammatory *S. typhimurium* induce Ca^{2+} -dependent degradation of I κB - α . Immunoblots with anti-I κB - α antibodies. (a) Whole cell extracts were prepared at the indicated times from model intestinal epithelia treated with basolateral TNF- α , apical wild-type *S. typhimurium* (WT), Hil Δ and PhoP^c mutants, and wild type with BAPTA-pretreated epithelia. (b) Monolayers were treated with basolateral ionomycin (1 $\mu\text{g}/\text{mL}$), thapsigargin (10 μM), or carbachol (100 μM) for the times indicated. (c) Model epithelia were treated with 20 $\mu\text{g}/\text{mL}$ cycloheximide, *S. typhimurium*, or CHX 1 hour before *S. typhimurium* infection.

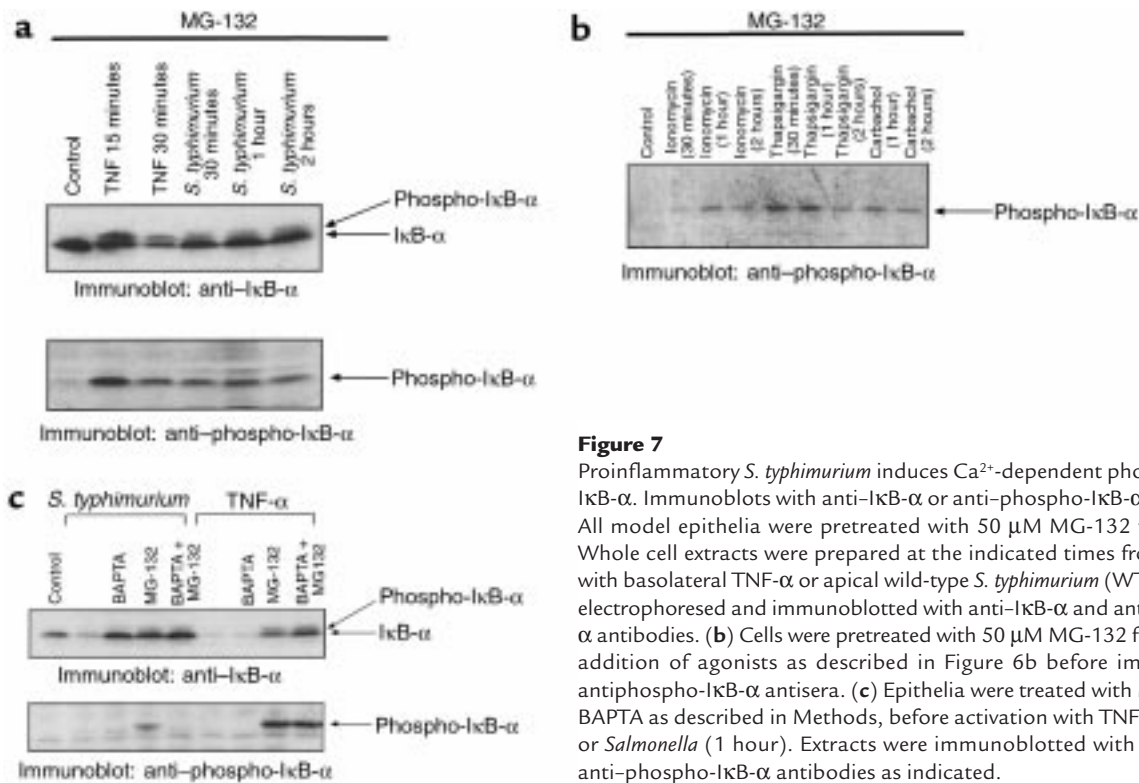


Figure 7 Proinflammatory *S. typhimurium* induces Ca²⁺-dependent phosphorylation of IκB-α. Immunoblots with anti-IκB-α or anti-phospho-IκB-α antibodies. (a) All model epithelia were pretreated with 50 μM MG-132 for 30 minutes. Whole cell extracts were prepared at the indicated times from cells treated with basolateral TNF-α or apical wild-type *S. typhimurium* (WT). Extracts were electrophoresed and immunoblotted with anti-IκB-α and anti-phospho-IκB-α antibodies. (b) Cells were pretreated with 50 μM MG-132 for 1 hour before addition of agonists as described in Figure 6b before immunoblot with antiphospho-IκB-α antisera. (c) Epithelia were treated with MG-132 and/or BAPTA as described in Methods, before activation with TNF-α (30 minutes) or *Salmonella* (1 hour). Extracts were immunoblotted with anti-IκB-α and anti-phospho-IκB-α antibodies as indicated.

found PhoP^c adherence at the onset of [Ca²⁺] increase was equal to that of the other strains (at 30 seconds, adherence of PhoP^c and HilΔ was 85% ± 22 and 96% ± 19 of wild-type values, respectively). Nor does adherence of this organism to model intestinal epithelia differ at later times (36 and data not shown).

S. typhimurium-induced Ca²⁺-mediated events are necessary for the induced phosphorylation and degradation of IκB-α. In response to many stimuli, the nuclear translocation of NF-κB is preceded by inducible phosphorylation and proteolytic degradation of an IκB isoform. We thus measured levels of IκB-α by Western blot analysis of whole cell extracts from model intestinal epithelia. Immunoblots from unstimulated cells revealed a single 37-kDa band, corresponding to the observed molecular weight of IκB-α (Figure 6a). Cells treated with TNF-α show the expected degradation of IκB-α within 30 minutes, with resynthesis observed within 1 hour. IκB-α degradation was observed in response to *S. typhimurium* (the IL-8-inducing wild-type and HilΔ mutant), with maximal degradation seen at 1 hour. The *S. typhimurium* mutant PhoP^c, which does not induce IL-8 secretion or NF-κB translocation, did not cause IκB-α degradation, consistent with our previous observations. Finally, chelating the intracellular Ca²⁺ of model epithelia with BAPTA abolished IκB-α degradation in response to wild-type *S. typhimurium* (Figure 6a, last row).

Calcium mobilizing agents demonstrated to induce IL-8 synthesis were also capable of inducing IκB-α degradation (Figure 6b). Ionomycin induced partial degradation at 30 minutes with resynthesis by 1 hour, whereas thapsigargin was a much more potent and sus-

tained inducer. In contrast, the receptor-mediated calcium mobilization elicited by carbachol acted in a much more delayed fashion, similar to the kinetics observed with *S. typhimurium* induction. The slower kinetics of IκB-α degradation induced by carbachol and *Salmonella* could imply that NF-κB activation occurs via the action of a secondarily synthesized cytokine. Both TNF-α and IL-1 are known to be secreted by T84 cells in response to *Salmonella* infection. *Salmonella*-induced IκB-α degradation was therefore assayed from epithelia cultured in the presence of the protein synthesis inhibitor cycloheximide (CHX) (Figure 6c). CHX has no discernible effects on IκB-α levels over 2 hours of treatment, whereas *S. typhimurium* results in peak IκB-α degradation at 1 hour. Model epithelia pretreated with CHX for 1 hour before *Salmonella* infection exhibited no reduction of induced IκB-α degradation, ruling out the possibility of a protein synthesis-dependent intermediate involved in the *Salmonella*-activated pathway. To the contrary, an augmentation of IκB-α degradation was observed at 2 hours. This result is due to the blockade of IκB-α resynthesis, which is induced at the transcriptional level within 2 hours by *Salmonella* (data not shown). Thus, IκB-α degradation can be elicited by calcium-dependent pathways and, when induced by *Salmonella* strains, does not require protein synthesis and correlates exactly with the ability to induce IL-8 expression or translocate NF-κB.

A more proximal regulatory event in the NF-κB activating pathway is the phosphorylation of IκB-α on 2 conserved serine residues (Ser 32 and 36). Phosphorylated IκB-α is highly labile but can be stabilized under

conditions of proteasomal blockade with the inhibitor MG-132. Stabilized I κ B- α can be detected via its reduced electrophoretic mobility or via phospho-specific I κ B- α antibodies. Using MG-132 pretreatment to block the proteolytic activity of the proteasome, the induced degradation of I κ B- α in response to TNF- α or *S. typhimurium* could be inhibited, allowing viewing of a higher molecular weight species consistent with the phosphorylated form (Figure 7a, top row). This finding implicates the proteasome in the activation pathways of both inducers. Immunoblots of the same extracts with an antibody specific to phospho-Ser-I κ B- α confirmed the inducible phosphorylation event (Figure 7a, bottom row). Similarly, induction of phospho-I κ B- α was observed in an MG-132-treated model epithelium stimulated with calcium mobilizing agonists (Figure 7b). Collectively, these data indicated that all of these agents are capable of inducing an I κ B- α kinase activity specific to I κ B- α Ser 32.

Finally, this technique of proteasomal blockade was used to test the effects of intracellular calcium chelation on I κ B- α phosphorylation and degradation. BAPTA pretreatment of model epithelium totally blocked the *Salmonella*-induced degradation of I κ B- α , while having no effect on TNF- α -induced degradation (Figure 7c, top row). Pretreatment of cells with MG-132 totally blocked I κ B- α degradation in response to both. The combination of BAPTA and MG-132 likewise blocked degradation induced by both activators. The same extracts were then analyzed with antibodies specific to phospho-I κ B- α . Under conditions of MG132 pretreatment, in which phospho-I κ B- α would be stabilized, we observed *S. typhimurium*- and TNF- α -induced phosphorylation similar to that observed in Figure 7a (Figure 7c, bottom row). Strikingly, BAPTA pretreatment had no effect on the inducible phosphorylation of I κ B- α in response to TNF- α , but completely abolished phosphorylation in response to *S. typhimurium*. Taken together, these experiments indicate that *Salmonella*-induced Ca²⁺ mobilization leads to phosphorylation and subsequent degradation of I κ B- α in a manner distinct from TNF- α -mediated pathways.

Discussion

In this report, we have identified signaling events by which an important enteric pathogen induces the intestinal epithelium to orchestrate a mucosal inflammatory response. Specifically, we find that in response to proinflammatory strains of *S. typhimurium*, the intestinal epithelium activates the immunomodulatory transcription factor NF- κ B (and consequent secretion of the potent PMN chemokine IL-8) by a mechanism involving increases in intracellular [Ca²⁺]. Mechanistically, the changes in intracellular [Ca²⁺] result in phosphorylation and degradation of I κ B- α . Because the clinical manifestations of salmonellosis result primarily from the inflammatory response to this pathogen (3, 11), these events appear essential to the pathogenesis of this infectious disease. Furthermore, considering that active

phases of inflammatory bowel disease are also characterized by an influx of PMN and that levels of IL-8 are elevated in vivo in these disorders (41–44), Ca²⁺-mediated NF- κ B activation may also be involved in initiating the aberrant epithelial chemokine secretion that may be a mediator of these intestinal disorders.

Bacterial-induced calcium mobilization. Several lines of evidence indicate that *S. typhimurium*-induced intracellular [Ca²⁺] increases are dissociable from bacterial entry into model epithelium. The invasion-defective *S. typhimurium* mutant Hil Δ was able to elicit this response (Figure 5a). Pace et al. have demonstrated that blocking *S. typhimurium* invasion with cytochalasin D, an inhibitor of actin polymerization, does not prevent the observed increase in intracellular [Ca²⁺] (21). Furthermore, others have recently reported *S. typhimurium* invasion was not required for NF- κ B activation in intestinal epithelial cells, although bacterial contact was necessary (40). Interestingly, noninvasive enteropathogenic *E. coli* also induces both Ca²⁺ mobilization (45, 46) and NF- κ B activation (47). We recently found that blocking *S. typhimurium* invasion with cytochalasin D also failed to block epithelial chemokine secretion of either IL-8 or pathogen-elicited epithelial chemoattractant (27 and unpublished data). Thus, although changes in intracellular [Ca²⁺] may play a role in host cell internalization of *S. typhimurium* (22), the Ca²⁺-mediated activation of NF- κ B and IL-8 secretion observed in response to *S. typhimurium* is independent of bacterial invasion.

How *S. typhimurium* induces an increase in intracellular [Ca²⁺] is not yet clear, but some insights can be drawn. One possibility that surface determinants present on wild-type or Hil Δ mutant *S. typhimurium* (but not present on the PhoP^c mutant) could function as a ligand for host cell membrane receptors. The PhoP^c strain (constitutive activation of the PhoP/PhoQ 2 component regulatory system) is thought to represent the phenotypic state characteristic of the intracellular phase of the *Salmonella* infection process (48). One feature that results is that PhoP^c organisms bear structural alterations in the lipid A component of cell wall LPS, which has been shown to induce an attenuated response from infected eukaryotic cells (49). This may imply that defective LPS signaling may play a role in the observed inability of PhoP^c to elicit calcium mobilization and subsequent events. Recent reports have demonstrated Ca²⁺-dependent signaling elicited by LPS in several host cell types (50, 51). We also note that I κ B- α degradation or activation of I κ B kinase in response to LPS has been reported to occur in monocytic cells (52, 53) with kinetics similar to the *Salmonella*- (and carbachol-) mediated responses reported herein (in epithelial cells). However, although LPS may play a role, clearly LPS alone is not inducing epithelial cell Ca²⁺ mobilization or IL-8 secretion, as neither inactive *S. typhimurium* (heat-killed or gentamicin-treated) or purified *S. typhimurium* LPS detectably induce these responses.

Signals leading to release of intracellular Ca²⁺ stores are often initiated via 7-transmembrane spanning α -helix G-protein-coupled receptors (i.e., the classic

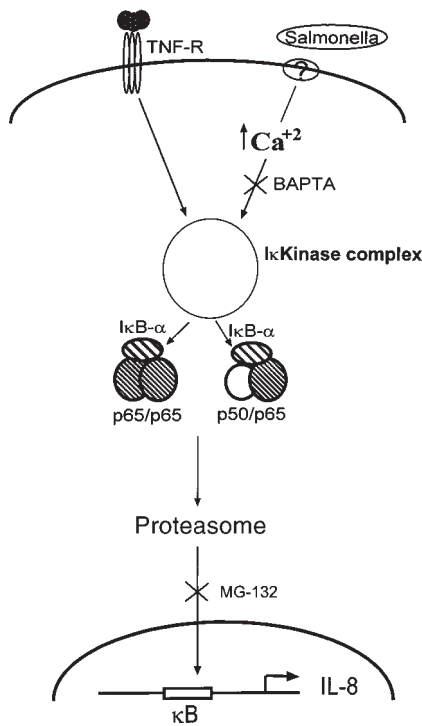


Figure 8
Model of *S. typhimurium*-induced NF- κ B activation. Both TNF- α and *S. typhimurium* induce NF- κ B nuclear translocation via activation of an I κ B kinase and subsequent proteasomal degradation of I κ B- α . However, *S. typhimurium*-mediated, but not TNF- α -mediated, activation of the kinase requires an increase in cytosolic [Ca²⁺].

pathway), but can also be mediated by cell-surface molecules that lack an intracellular domain (as happens, for example via glycoposphoinositide-anchored Fc γ receptors on human neutrophils) presumably by clustering associated signaling molecules (54, 55). It seems reasonable that a receptor-mediated mechanism of either of these types could mediate *S. typhimurium*-induced Ca²⁺ mobilization. Receptor-mediated events have been reported in other systems. In airway epithelium, *Pseudomonas aeruginosa* activates NF- κ B via interactions with the cellular pilin receptor, and purified bacterial pilin or antibodies to the cellular pilin receptor could mimic this response (56).

Carbachol elicits a well-characterized inositoltriphosphate-mediated (IP₃-mediated) Ca²⁺ release from intracellular stores, followed by a Ca²⁺ influx. *S. typhimurium* attachment also induces an increase in cytosolic IP₃ in eukaryotic cells (22). In addition, the observation that blocking Ca²⁺ influx with EGTA had a similar effect on the intracellular [Ca²⁺] increase induced by either carbachol or *S. typhimurium* suggests that the *S. typhimurium*-induced intracellular [Ca²⁺] increase might occur via a mechanism similar to such classic soluble agonists. Although the slower kinetics of the *S. typhimurium*-induced response are not typical of such agonists, the kinetics of the response of individual cells may be much faster. However, there is also precedent for slower IP₃-independent release of intra-

cellular stores even when an increase in IP₃ is observed (57). The release of intracellular Ca²⁺ stores could lead to the opening of Ca²⁺ channels, or, alternatively, Ca²⁺ influx could be the result of a porinlike protein from *S. typhimurium* similar to the case shown for *Neisseria* (58).

S. typhimurium may activate epithelial signaling pathways via type III-mediated translocation of an activating factor into epithelial cells. Some examples of this type of mechanism are the injection of Yops by *Yersinia* spp. (59) and the recently reported observation that enteropathogenic *E. coli* inserts a tyrosine kinase substrate into host cells (60). There are also examples of *S. typhimurium* translocating effector proteins such as SopE and SopB into host cells (61–63). Given that SopB has been shown to have phosphoinositol phosphatase activity, it is possible to envisage a specific role for this protein in eliciting Ca²⁺ mobilization. That HilA (which induced Ca²⁺ mobilization) is deficient in expression of the type III secretion apparatus suggests that normal levels of expression of this complex may not be required for the activation of the NF- κ B pathway by this pathogen.

Ca²⁺-mediated activation of NF- κ B. Calcium-dependent NF- κ B activation occurs in response to other physiologic stimuli such as acetylcholine receptor ligation (this report), the neuropeptide substance P (24), and endoplasmic reticulum “overload” (23). In addition, our data show that nonreceptor-mediated pharmacologic means of increasing intracellular [Ca²⁺] (ionomycin, thapsigargin) also induced IL-8 activation. Thus, regardless of their source, increases in intracellular [Ca²⁺] appear to be able to induce I κ B- α degradation and nuclear translocation of NF- κ B in certain cell types. Because chelation of intracellular Ca²⁺ selectively inhibits these *S. typhimurium*-induced events, we propose the model diagrammed in Figure 7. NF- κ B dimers (p50/p65 and p65/p65) exist as cytoplasmic complexes containing I κ B- α (as well as, presumably, I κ B- β , I κ B- ϵ , p100, and p105). *S. typhimurium*, but not TNF- α , activates pathways that utilize increases in cytosolic [Ca²⁺] that, perhaps along with other second messengers, lead to phosphorylation of I κ B- α . Experiments with BAPTA indicate that the *S. typhimurium*-induced calcium signal is occurring proximal to an I κ B kinase, whereas our data with the proteasomal inhibitor MG-132 indicate that proteasomal-mediated degradation I κ B- α is shared by both pathways.

Work with the prototypical proinflammatory cytokines, TNF- α and IL-1 β , has delineated parallel activation pathways involving a direct series of specific protein-protein interactions from the membrane receptors of TNF- α and IL-1 β (TNF- α R and Toll-like receptor respectively) to a recently characterized kinase activity thought to be responsible for the specifically phosphorylating I κ B- α (reviewed in refs. 18, 64, and 65). The enzymatic activity has been traced to 2 I κ B kinases present in a large (800 kDa) multiprotein complex (66, 67). Because of the wide array of NF- κ B-inducing stimuli, and the need for tight con-

trol over this critical modulator of inflammatory reactions, it has been suggested that the kinase complex functions as a “signalsome,” integrating a variety of second messengers into a final common pathway (67). For example, aside from TNF- α and IL-1, activators of MAP kinase pathways have been shown to result in IKK activation (68). Thus, there is intense interest in characterizing the regulatory components of the “signalsome” and elucidating the multiple pathways that feed into it. A Ca²⁺-dependent kinase would seem to be a reasonable candidate to provide a link from Ca²⁺ mobilization to activation of IKK. How such a link occurs and whether it is to the currently conceptualized IKK complex, or other hypothetical kinases, are currently under investigation.

It is possible that numerous host-pathogen interactions that result in inflammatory responses will involve Ca²⁺-mediated activation of NF- κ B, suggesting the existence of a signaling pathway involved in innate immunity. Such a pathway would be particularly important given studies that show that even normal intestinal microflora can induce a similar acute inflammatory response in murine models of inflammatory bowel disease (69, 70). Furthermore, because of the near ubiquitous involvement of the NF- κ B systems in immune and inflammatory reactions, the search for safe effective pharmacologic inhibitors of NF- κ B has been limited. Our results with the intracellular calcium chelator BAPTA indicate that specific activators of NF- κ B, such as bacterial pathogens, may be selectively inhibited without affecting other critical NF- κ B activating pathways necessary for normal immune function.

Acknowledgments

This work was supported by grants from the National Institutes of Health (DK09800 to A.T. Gewirtz; DK-47662 to J.L. Madara; and HL60033 to A.S. Neish) and Crohn's and Colitis Foundation of America (to D. Merlin).

- Madara, J.L. 1990. Pathobiology of the intestinal epithelial barrier. *Am. J. Pathol.* **137**:1273–1281.
- Yamada, T., Alpers, D.H., Owyang, C., Powell, D.W., and Silverstein, F.E. 1995. *Textbook of gastroenterology*. J.B. Lippincott. Philadelphia, PA. 1606–1629.
- Takeuchi, A. 1967. Electron microscope studies of experimental Salmonella infection. *Am. J. Pathol.* **50**:109–119.
- McCormick, B., Gewirtz, A., and Madara, J.L. 1998. Epithelial crosstalk with bacteria and immune cells. *Curr. Opin. Gastro.* **14**:492–497.
- McCormick, B.A., Miller, S.I., and Madara, J.L. 1996. New insights on molecular pathways utilized by salmonella species in cell binding. *Front. Biosci.* **1**:d131–d145.
- Eckmann, L., et al. 1993. Differential cytokine expression by human intestinal epithelial cell lines: regulated expression of interleukin-8. *Gastroenterology*. **105**:1689–1697.
- Eckmann, L., Kagnoff, M., and Fierer, J. 1993. Epithelial cells secrete the chemokine interleukin-8 in response to bacterial entry. *Infect. Immun.* **61**:4569–4574.
- McCormick, B.A., Colgan, S.P., Archer, C.D., Miller, S.I., and Madara, J.L. 1993. *Salmonella typhimurium* attachment to human intestinal epithelial monolayers: transcellular signalling to subepithelial neutrophils. *J. Cell Biol.* **123**:895–907.
- Jung, H.C., et al. 1995. A distinct array of proinflammatory cytokines is expressed in human colon epithelial cells in response to bacterial invasion. *J. Clin. Invest.* **95**:55–65.
- Gewirtz, A.T., et al. 1998. Pathogen-induced chemokine secretion from model intestinal epithelium is inhibited by lipoxin A4 analogs. *J. Clin. Invest.* **101**:1860–1869.
- McCormick, B., et al. 1995. Surface attachment of *Salmonella typhimurium* to intestinal epithelia imprints the subepithelial matrix with gradients chemotactic for neutrophils. *J. Cell Biol.* **131**:1599–1608.
- Kunsch, C., and Rosen, C.A. 1993. NF-kappa B subunit-specific regulation of the interleukin-8 promoter. *Mol. Cell. Biol.* **13**:6137–6146.
- Kunsch, C., Lang, R.K., Rosen, C.A., and Shannon, M.F. 1994. Synergistic transcriptional activation of the IL-8 gene by NF-kappa B p65 (RelA) and NF-IL-6. *J. Immunol.* **153**:153–164.
- Mukaida, N., Shiroo, M., and Matsushima, K. 1989. Genomic structure of the human monocyte-derived neutrophil chemotactic factor IL-8. *J. Immunol.* **143**:1366–1371.
- Mukaida, N., Mahe, Y., and Matsushima, K. 1990. Cooperative interaction of nuclear factor-kappa B- and cis-regulatory enhancer binding protein-like factor binding elements in activating the interleukin-8 gene by pro-inflammatory cytokines. *J. Biol. Chem.* **265**:21128–21133.
- Mukaida, N., Okamoto, S., Ishikawa, Y., and Matsushima, K. 1994. Molecular mechanism of interleukin-8 gene expression. *J. Leukoc. Biol.* **56**:554–558.
- Ghosh, S., May, M.J., and Kopp, E.B. 1998. NF-kappa B and Rel proteins: evolutionarily conserved mediators of immune responses. *Annu. Rev. Immunol.* **16**:225–260.
- Bauerle, P. 1998. Pro-inflammatory signaling: last pieces in the NF-kB puzzle? *Curr. Biol.* **8**:19–22.
- Thanos, D., and Maniatis, T. 1995. NF-kappa B: a lesson in family values. *Cell.* **80**:529–532.
- Hobbie, S., Chen, L., Davis, R., and Galan, J.E. 1997. Involvement of mitogen-activated protein kinase pathways in the nuclear responses and cytokine production induced by *Salmonella typhimurium* in cultured intestinal epithelial cells. *J. Immunol.* **159**:5550–5559.
- Pace, J., Hayman, M.J., and Galan, J.E. 1993. Signal transduction and invasion of epithelial cells by *S. typhimurium*. *Cell.* **72**:505–514.
- Ruschkowski, S., Rosenshine, I., and Finlay, B. 1992. *Salmonella typhimurium* induces an inositol phosphate flux in infected epithelial cells. *FEMS Microbiol. Lett.* **74**:121–126.
- Pahl, H.L., Sester, M., Burgert, H.G., and Baeuerle, P.A. 1996. Activation of transcription factor NF-kappaB by the adenovirus E3/19K protein requires its ER retention. *J. Cell Biol.* **132**:511–522.
- Lieb, K., Fiebich, B.L., Berger, M., Bauer, J., and Schulze-Osthoff, K. 1997. The neuropeptide substance P activates transcription factor NF-kappa B and kappa B-dependent gene expression in human astrocytoma cells. *J. Immunol.* **159**:4952–4958.
- Dharmasathaphorn, K., and Madara, J.L. 1990. Established intestinal cell lines as model systems for electrolyte transport studies. *Methods Enzymol.* **192**:354–389.
- Seetoo, K.F., et al. 1997. A cytosolic calcium transient is not necessary for degranulation or oxidative burst in immune complex-stimulated neutrophils. *J. Leukoc. Biol.* **62**:329–340.
- Gewirtz, A.T., Siber, A.M., Madara, J.L., and McCormick, B.A. 1999. Orchestration of neutrophil movement by intestinal epithelial cells in response to *salmonella typhimurium* can be uncoupled from bacterial internalization. *Infect. Immun.* **67**:608–617.
- Neish, A.S., et al. 1995. Endothelial interferon regulatory factor 1 cooperates with NF-kappa B as a transcriptional activator of vascular cell adhesion molecule 1. *Mol. Cell. Biol.* **15**:2558–2569.
- Fiedler, M.A., Wernke-Dollries, K. and Stark, J.M. 1998. Inhibition of TNF-alpha-induced NF-kappaB activation and IL-8 release in A549 cells with the proteasome inhibitor MG-132. *Am. J. Respir. Cell Mol. Biol.* **19**:259–268.
- Read, M.A., et al. 1995. The proteasome pathway is required for cytokine-induced Endothelial-leukocyte adhesion molecule expression. *Immunity*. **2**:493–506.
- Dickinson, K.E., Frizzell, R.A., and Sekar, M.C. 1992. Activation of T84 cell chloride channels by carbachol involves a phosphoinositide-coupled muscarinic M3 receptor. *Eur. J. Pharmacol.* **225**:291–298.
- Fischer, H., Illek, B., Negulescu, P.A., Claus, W., and Machen, T.E. 1992. Carbachol-activated calcium entry into HT-29 cells is regulated by both membrane potential and cell volume. *Proc. Natl. Acad. Sci. USA.* **89**:1438–1442.
- Kuznetsov, G., Brostrom, M.A., and Brostrom, C.O. 1992. Demonstration of a calcium requirement for secretory protein processing and export. Differential effects of calcium and dithiothreitol. *J. Biol. Chem.* **267**:3932–3939.
- Takemura, H., Hughes, A.R., Thastrup, O., and Putney, J.W., Jr. 1989. Activation of calcium entry by the tumor promoter thapsigargin in parotid acinar cells. Evidence that an intracellular calcium pool and not an inositol phosphate regulates calcium fluxes at the plasma membrane. *J. Biol. Chem.* **264**:12266–12271.
- Henderson, R.M., Ashford, M.L., MacVinish, L.J., and Cuthbert, A.W. 1992. Chloride channels and anion fluxes in a human colonic epithelium (HCA-7). *Br. J. Pharmacol.* **106**:109–114.
- McCormick, B., Miller, S., Carnes, D., and Madara, J. 1995. Transepithe-

- lial signaling to neutrophils by Salmonellae: a novel virulence mechanism for gastroenteritis. *Infect. Immun.* **63**:2302–2309.
37. Bajaj, V., Hwang, C., and Lee, C.A. 1995. *hilA* is a novel *ompR*/*toxR* family member that activates the expression of *Salmonella typhimurium* invasion genes. *Mol. Microbiol.* **18**:715–727.
 38. Garcia Vescovi, E., Soncini, F.C., and Groisman, E.A. Mg²⁺ as an extracellular signal: environmental regulation of *Salmonella* virulence. *Cell.* **1996**, **84**:165–174.
 39. Miller, S., and Mekalanos, J. 1990. Constitutive expression of the *phoP* regulon attenuates *Salmonella* virulence and survival within macrophages. *J. Bacteriol.* **172**:2485–2490.
 40. Eaves-Pyles, T., Szabo, C., and Salzman, A.L. 1999. Bacterial invasion is not required for activation of NF-kappaB in enterocytes. *Infect. Immun.* **67**:800–804.
 41. Daig, R., et al. 1996. Increased interleukin 8 expression in the colon mucosa of patients with inflammatory bowel disease. *Gut.* **38**:216–222.
 42. Funakoshi, K., et al. 1995. Study of cytokines in ulcerative colitis. *J. Gastroenterol.* **30**(Suppl. 8):61–63.
 43. Mazzucchelli, L., et al. 1994. Expression of interleukin-8 gene in inflammatory bowel disease is related to the histological grade of active inflammation. *Am. J. Pathol.* **144**:997–1007.
 44. Nielsen, O.H., Rudiger, N., Gaustadnes, M., and Horn, T. 1997. Intestinal interleukin-8 concentration and gene expression in inflammatory bowel disease. *Scand. J. Gastroenterol.* **32**:1028–1034.
 45. Foubister, V., Rosenshine, I., and Finlay, B.B. 1994. A diarrheal pathogen, enteropathogenic *Escherichia coli* (EPEC), triggers a flux of inositol phosphates in infected epithelial cells. *J. Exp. Med.* **179**:993–998.
 46. Baldwin, T.J., Ward, W., Aitken, A., Knutton, S., and Williams, P.H. 1991. Elevation of intracellular free calcium levels in HEp-2 cells infected with enteropathogenic *Escherichia coli*. *Infect. Immun.* **59**:1599–1604.
 47. Savkovic, S.D., Koutsouris, A., and Hecht, G. 1997. Activation of NF-kappaB in intestinal epithelial cells by enteropathogenic *Escherichia coli*. *Am. J. Physiol.* **273**:C1160–C1167.
 48. Miller, S. 1991. *PhoP/PhoQ*: macrophage-specific modulators of *Salmonella* virulence? *Mol. Microbiol.* **5**:2073–2078.
 49. Guo, L., et al. 1997. Regulation of lipid A modifications by *Salmonella typhimurium* virulence genes *phoP-phoQ*. *Science.* **276**:250–253.
 50. Woods, J.S., Ellis, M.E., Diegez-Acuna, F.J., and Corral, J. 1999. Activation of NF-kB in normal rat kidney epithelial (NRK52E) cells is mediated via a redox-insensitive, calcium-dependent pathway. *Toxicol. Appl. Pharmacol.* **154**:219–227.
 51. Hsuan, S.L., et al. 1999. *Pasteurella haemolytica* leukotoxin and endotoxin induced cytokine gene expression in bovine alveolar macrophages requires NF-kappaB activation and calcium elevation. *Microb. Pathog.* **26**:263–273.
 52. Fischer, C., et al. 1999. Differential effects of lipopolysaccharide and tumor necrosis factor on monocytic IkappaB kinase signalsome activation and IkappaB proteolysis. *J. Biol. Chem.* **274**:24625–24632.
 53. Henkel, T., et al. 1993. Rapid proteolysis of I kappa B-alpha is necessary for activation of transcription factor NF-kappa B. *Nature.* **365**:182–185.
 54. Brunkhorst, B.A., et al. 1992. Differential roles of FcγRII and FcγRIII in immune complex stimulation of human neutrophils. *J. Biol. Chem.* **267**:20659–20666.
 55. Strohmeier, G.R., et al. 1995. Role of the Fc gamma R subclasses Fc gamma RII and Fc gamma RIII in the activation of human neutrophils by low and high valency immune complexes. *J. Leukoc. Biol.* **58**:415–422.
 56. DiMango, E., Ratner, A.J., Bryan, R., Tabibi, S., and Prince, A. 1998. Activation of NF-kappaB by adherent *Pseudomonas aeruginosa* in normal and cystic fibrosis respiratory epithelial cells. *J. Clin. Invest.* **101**:2598–2605.
 57. Rosales, C., and Brown, E.J. 1992. Signal transduction by neutrophil immunoglobulin G Fc receptors. Dissociation of intracytoplasmic calcium concentration rise from inositol 1,4,5-trisphosphate. *J. Biol. Chem.* **267**:5265–5271.
 58. Muller, A., et al. 1999. Neisserial porin (PorB) causes rapid calcium influx in target cells and induces apoptosis by the activation of cysteine proteases. *EMBO J.* **18**:339–352.
 59. Cornelis, G.R., and Wolf-Watz, H. 1997. The *Yersinia* Yop virulon: a bacterial system for subverting eukaryotic cells. *Mol. Microbiol.* **23**:861–867.
 60. Kenny, B., et al. 1997. Enteropathogenic *E. coli* (EPEC) transfers its receptor for intimate adherence into mammalian cells. *Cell.* **91**:511–520.
 61. Wood, M., Rosqvist, R., Mullan, P., Edwards, M., and Galyov, E. 1996. SopE, a secreted protein of *Salmonella dublin*, is translocated into the target eukaryotic cell via a sip-dependent mechanism and promotes bacterial entry. *Mol. Microbiol.* **22**:327–338.
 62. Norris, F.A., Wilson, M.P., Wallis, T.S., Galyov, E.E., and Majerus, P.W. 1998. SopB, a protein required for virulence of *Salmonella dublin*, is an inositol phosphate phosphatase. *Proc. Natl. Acad. Sci. USA.* **95**:14057–14059.
 63. Hardt, W.D., Chen, L.M., Schuebel, K.E., Bustelo, X.R., and Galan, J.E. 1998. *S. typhimurium* encodes an activator of Rho GTPases that induces membrane ruffling and nuclear responses in host cells. *Cell.* **93**:815–826.
 64. Stancovski, I., and Baltimore, D. 1997. NF-kappaB activation: the IkappaB kinase revealed? *Cell.* **91**:299–302.
 65. Jobin, C., et al. 1999. TNF receptor-associated factor-2 is involved in both IL-1 beta and TNF- alpha signaling cascades leading to NF-kappa B activation and IL-8 expression in human intestinal epithelial cells. *J. Immunol.* **162**:4447–4454.
 66. Chen, Z.J., Parent, L., and Maniatis, T. 1996. Site-specific phosphorylation of IkappaBalpha by a novel ubiquitination-dependent protein kinase activity. *Cell.* **84**:853–862.
 67. Maniatis, T. 1997. Catalysis by a multiprotein IkappaB kinase complex. *Science.* **278**:818–819.
 68. Lee, F.S., Hagler, J., Chen, Z.J., and Maniatis, T. 1997. Activation of the IkappaB alpha kinase complex by MEKK1, a kinase of the JNK pathway. *Cell.* **88**:213–22.
 69. Kuhn, R., Lohler, J., Rennick, D., Rajewsky, K., and Muller, W. 1993. Interleukin-10-deficient mice develop chronic enterocolitis. *Cell.* **75**:263–274.
 70. Panwala, C.M., Jones, J.C., and Viney, J.L. 1998. A novel model of inflammatory bowel disease: mice deficient for the multiple drug resistance gene, *mdr1a*, spontaneously develop colitis. *J. Immunol.* **161**:5733–5744.